



Third Draft

Management & Development

Plan for the

Skeleton Coast Area of the

Namib-Skeleton Coast National

Park

For the Period of 2009-2013

Second draft: 28 January 2009

Table of contents

Abbreviations.....	4
Overview of the Namib Skeleton Coast National Park.....	5
Authority of the Management & Development Plan.....	9
Philosophy of approach.....	11
Management system.....	12
Institutional arrangements.....	14
Part 1: Vision, Goal and Objectives.....	19
1.1 Vision.....	19
1.2 Goal.....	19
1.3 Objectives.....	19
Part 2: Management units and zonation.....	21
2.1 Area background.....	21
2.2 Habitat units.....	25
2.3 Zonation.....	28
2.3.1 Recreational Areas.....	32
2.3.2 Business Areas.....	33
2.3.3 Infrastructure, residential and industrial.....	33
Part 3: Management targets.....	34
3.1 Landscape approach.....	34
3.2 Co-management.....	35
3.3 Biodiversity conservation.....	38
3.4 Coastal management.....	47
3.5 Recreational aspects.....	48
3.6 Tourism management and development.....	49
3.7 Prospecting and mining.....	53
3.8 Aquaculture.....	56
3.8.1 Principle.....	56
3.8.2 Vision.....	56
3.8.3 Strategies.....	56
3.9 Other industries.....	56

3.9.1 Principle.....	56
3.9.2 Vision.....	56
3.9.3 Strategies.....	56
3.10 Law enforcement.....	56
3.11 Water management	58
3.12 Fencing.....	60
3.13 Roads.....	61
3.14 Monitoring and Information Management.....	62
3.15 Research.....	65
3.16 Education and Awareness.....	67
3.17 Development Guidelines.....	68
3.18 Rehabilitation.....	70
3.19 Financing.....	71
Part 4: Record keeping.....	72
3.1 Annual work plans	72
3.2 Annual budget	73
Part 5: Inventories and background information.....	76
Part 6: Studies and reports	77
APPENDIX A - PROPOSED development and investment opportunities	78
Regulations.....	80
Preamble.....	80
A. Public Access	80
B. Signage, advertising and structures.....	81
C. Tourism and Concessions	82
D. Plant and animal harvesting	83
E. Prospecting and mining.....	83
F. Industries	83
G. Waste, pollution and litter.....	84
H. Honorary Wardens	84
I. Powers of an Officer	85

Abbreviations

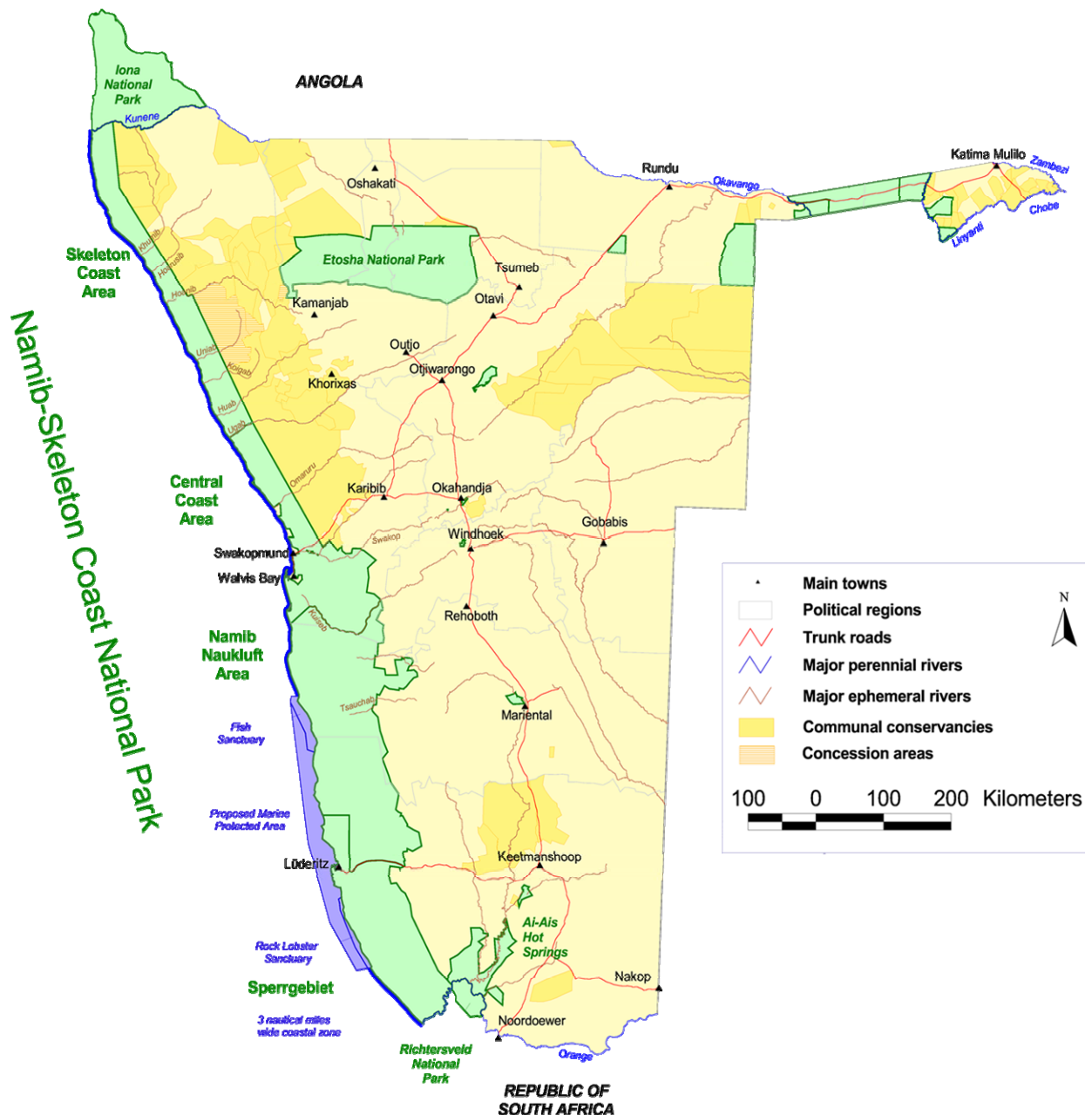
BCLME - Benguela Current Large Marine Ecosystem
CA - Central Area
CEO - Chief Executive Officer
CF - Consultative Forum
DEA - Directorate of Environmental Affairs (in MET)
EIA - Environmental Impact Assessment
EMP - Environmental Management Plan
HQ - Headquarters
HW - Honorary warden
IBA - Important Bird Area
IPA - Important Bird Area
IUCN - World Conservation Union
KBA - Key Biodiversity Area
LA - Local Authority
MDP - Management and Development Plan
MET - Ministry of Environment and Tourism
MFMR - Ministry of Fisheries and Marine Resources
NAMPORT - Namibian Port Authority
NAMPOL - Namibian Police
NGO - Non Governmental Organisation
NSCNP - Namib Skeleton Coast National Park
ORV - Off-road Vehicle
TORs - Terms of Reference
SEA - Strategic Environmental Assessment
SF - Strategic Forum

Acknowledgements

To follow

Overview of the Namib Skeleton Coast National Park

The Namib-Skeleton Coast National Park (hereafter NSCNP) stretches along the entire Namibian coastline, a distance of about 1,570 km, from the Orange River in the south to the Kunene River in the north. It comprises four main Management Areas, the "Sperrgebiet" (name under review) in the south, the Namib-Naukluft, the Central Area and the Skeleton Coast. At its narrowest point in the Skeleton Coast, the Park extends about 25 km inland, while at its widest in the Naukluft area it extends inland about 180 km to the top of the escarpment. Namibia is the only continental country in the world that has its entire coastline protected as a national park.



The NSCNP is the 8th largest protected area in the world, the 6th largest terrestrial protected area and the largest park in Africa (see Table 1), covering an area of 10.754 million hectares, or 107,540 km².

Table 1: The 10 largest protected areas in the world.

No.	Name	Ecosystem	Country	Size (ha)
1	Greenland's National Park	Terrestrial and coastal; Arctic island	Greenland	97,200,000
2	Ar-Rub'al-Khali Wildlife Management Area	Terrestrial; Desert	Saudi Arabia	64,000,000
3	Great Barrier Reef Marine Park	Marine & coastal	Australia	34,500,000
4	Northwestern Hawaiian Islands' Coral Reef Ecosystem Reserve	Marine & coastal	United States of America	34,000,000
5	Amazonia Forest Reserve	Terrestrial; Tropical rain forest	Colombia	32,000,000
6	Qiang Tang Nature Reserve	Terrestrial; Alpine Tibetan plateau grasslands	China	25,000,000
7	Cape Churchill Wildlife Management Area	Terrestrial; intertidal & marine	Canada	14,000,000
8	Namib-Skeleton Coast National Park	Terrestrial & coastal; Desert ecosystems	Namibia	10,754,000
9	Northern Wildlife Management Zone	Terrestrial; Desert	Saudi Arabia	10,000,000
10	Alto Orinoco-Casiquiare Biosphere Reserve	Terrestrial; tropical rain forest	Venezuela and Bolivia	8,000,000

However, the NSCNP does not exist in isolation. In the south across the Orange River it borders on the Richtersveld in South Africa, which comprises a protected area of about 160,000 ha within a multiple use buffer zone of about 398,425 ha. This whole area forms the Ai-Ais/Richtersveld Transfrontier Conservation Area (TFCA) under a formal cooperative Agreement between the Governments of Namibia and South Africa.

To the north across the Kunene River it joins the Iona National Park in Angola, which covers about 585,000 ha. The Governments of Namibia and Angola have signed an Agreement to promote transfrontier cooperation between these parks.

In Namibia the NSCNP is contiguous with a large number of protected areas, concessions, conservancies and private land managed for conservation. These are shown in Table 2. Most notable amongst these are the following:

- Coastal and Marine Protected Area off the Sperrgebiet and Namib-Naukluft area, running for 400 km up the coast and about 30 km wide, covering an area of 1.2 million ha and containing all of Namibia's islands;
- Ai-Ais/Fish River Canyon National Park which in turn borders on private protected areas;
- Contiguous with 20 communal conservancies and three wildlife and tourism concession areas, and via them linked to the Etosha National Park (2.29 million ha) and thence to further communal and private conservation areas;
- Borders on at least 2 million ha of freehold conservancies and private protected areas.

Table 2: Contiguous conservation areas with the NSCNP

Country	Name / Tenure	Area (ha)
South Africa	Richtersveld and buffer area / communal (RSA Parks)	558,425
Angola	Iona National Park / state	585,000
Namibia	Communal conservancies	6,235,500
	Wildlife & tourism Concessions	800,000
	Freehold conservancies and private protected areas	2,050,000
	State Parks (Ministry of Environment & Tourism)	2,651,200
	Marine Protected Area (Ministry of Fisheries & Marine Resources)	1,200,000
TOTAL		14,080,125

(Note that the extent of land under conservation, particularly private land, is constantly changing (increasing) and that, because there is no registration mechanism for private protected areas, this figure represents an absolute minimum area.)

In total the NSCNP borders onto over 14 million ha of land and sea that is managed primarily for wildlife, biodiversity, conservation and tourism. Together with the NSCNP, this represents a contiguous area of almost 25 million ha. One of the greatest challenges with potentially the greatest rewards is to develop effective, constructive and efficient co-management mechanisms across these land- and sea-scapes to optimize both the environmental (including biodiversity) and socio-economic values, while at the same time using these open systems to (a) mitigate and buffer the impacts of climate change (b) create incentives for neighbouring land owners and custodians to become part of this conservation landscape.

The proclamation of this protected area represents one of Namibia's greatest conservation achievements since gaining Independence in 1990, and one of the most exciting developments in the history of conservation in this country.

Authority of the Management & Development Plan

This Management & Development Plan (MDP) for the Skeleton Coast Area (SCA) of the Namib-Skeleton Coast National Park (NSCNP) sets out the vision, objectives and guidelines for the management and development of the park. As such, it represents the policies and intentions of the Ministry of Environment and Tourism (MET), the Ministry of Fisheries and Marine Resources (MFMR) and their partners. The MDP and its accompanying regulations are accepted as the ultimate authority for the Park. All involved with the Park, including MET and MFMR decision-makers and management staff, personnel of other Ministries and Parastatals, private sector companies and individuals, all contractors, partners, tourists and any entity and individual dealing in any way with the park, must ensure that all actions and decisions relating to the park are in strict accordance with these documents.

Senior staff appointed to run the park, i.e. the Area **Warden** and his/her MFMR counterpart(s), are ultimately responsible for ensuring that the MDP is implemented in effective and efficient ways, and that the regulations are enforced. S/he is also responsible for ensuring effective day-to-day management, dynamic, responsive and pro-active rolling planning as well as contributing to longer-term planning.

This MDP (2009-2014) will be thoroughly reviewed and, where necessary, revised, every five years. The next review must be done in 2013/14 for implementation in 2014. Any changes that must be made in the interim to Parts 1-4 and 7 must be recommended by the SCAs Consultative Forum (CF) and approved by the Strategic Forum (SF), and be reflected in the respective minutes by means of a signed and dated amendment. These approved changes must be appended to the master copies of the MDP, three held within the SCA (MET Walvis Bay and Swakopmund, and MFMR Swakopmund respectively), another held at the Office of the Chief Executive Officer of the Namib-Skeleton Coast National Park, a fourth held in MET Head Office in Windhoek (Director of Parks & Wildlife) and the fifth held by the Director of Fisheries in Windhoek. Changes may be made to Parts 5 & 6, with the joint approval of the Park **CEO**, the Directors of Parks & Wildlife and Fisheries respectively, as new information becomes available.

The MDP must be viewed as a valuable and central document by all management- and policy-level staff and stakeholders involved with the SCA. They should be familiar with its contents, and should make use of it to familiarize new staff with the vision, aims, objectives and policies of the Area and Park.

It is part of every MET and MFMR staff member's job and stakeholder's responsibility to help implement this MDP. It is also every staff member and stakeholder's responsibility to propose improvements to the plan, as well as improvements in how the plan may be implemented. Park management is a team

effort that cuts across all sectors. The future well-being and development of the SCA and the Namib-Skeleton Coast National Park depends on this team approach.

.....
Director: Parks & Wildlife, MET

Windhoek, date:.....

.....
Permanent Secretary, MET

Windhoek, date:.....

.....
Minister: MET

Windhoek, date:.....

.....
Director: Fisheries, MFMR

Windhoek, date:.....

.....
Permanent Secretary, MFMR

Windhoek, date:.....

.....
Minister: MFMR

Windhoek, date:.....

Philosophy of approach

The plan for this Park has been designed and structured to be priority focused and action orientated, to facilitate implementation and the achievement of outputs and outcomes. The plan is linked to an annual cycle of management and oversight, involving the preparation of annual work plans, budgets, reporting and two levels of Area oversight - a Strategic Forum and a Consultative Forum.

The plan is "principles" based. These principles serve essentially as mini policy statements. Not all eventualities can be planned for, but if the basic principles are established, decisions can be readily made against these principles and thus be in line with Area and Park policy.

The plan is designed around a uniform structure for easy reference and use, and the language (apart from some basic technical terms used in the conservation sector) is kept simple for broad accessibility.

The plan should be used in conjunction with Area and Park legislation and regulations, as well as with other relevant literature on the area. No superfluous or duplicate information is provided in the plan. A reference list of the more significant publications and reports on the area is contained in Part 6.

The Plan was developed in a highly participatory, bottom-up way. The following steps were followed:

- An initial brainstorming meeting was held with MET Parks & Wildlife Director, MFMR officials and the Chief Wardens of the coastal Parks to identify key issues.
- A two-day public workshop was held in Swakopmund for all stakeholders to (a) explain and discuss the process, (b) identify the key issues for the SCA, (c) to develop a vision and objectives for the Area, and (d) to map and discuss zonation and land use.
- A series of smaller, focused meetings were held with special interest groups, including town councils, local communities (including representatives of the Topnaar community), and conservation, recreation and business interests.
- Two public meetings were held to discuss the outcomes of the workshop and receive further inputs, in Swakopmund and Windhoek.
- A 1st draft of the MDP was prepared. This was distributed to key stakeholders involved in the workshop and meetings. All interested and affected parties were invited to obtain a copy and review the draft MDP and provide comments - a review period of 4 weeks was provided.

- Based on some minor suggestions, a 2nd draft of the MDP was prepared. This was presented to a technical meeting of senior park staff in Mowe Bay on 8 January 2009.
- Regulations have been written and distributed for comment
- A final MET and MFMR meeting for senior management, chaired by the Permanent Secretary, was held to review the 3rd draft. A number of minor comments were made, which have been incorporated into this final draft. The following key next steps emerged:
 - Develop as a separate companion document, the ideal staffing arrangements for the whole Namib-Skeleton Coast National Park which addresses the needs of each Management Area, including *inter alia* posts, Categories, task descriptions, location - all personalized to the specific requirements of the Areas and Park and for the implementation of the Area MDPs that make up Park management. Adopt a fresh approach to support Information, Extension and Environmental Education, Monitoring, Citizen liaison, inter-sectoral collaboration - and adopt an efficient business-outputs staffing approach with a Park CEO and sufficiently senior staffing at Area level;
 - Develop as separate companion documents, a detailed Tourism Development Plan (see appendix A for initial ideas) and a Park Business Plan, each designed to be operational at Area level as well as at Park and greater landscape levels.
- Circulate this 3rd draft of the MDP formally to key line ministries for comment (MFMR, MME, MWT), to the Kunene Regional Council and NWR.
- Comments received will be considered and a final draft of the Management & Development Plan will be prepared and formally adopted and signed off by MET and MFMR.
- The approved Management & Development Plan for the SCA of the Namib-Skeleton Coast National Park will be distributed as a public document and made widely available to all relevant stakeholders, partners and interested and affected parties. It was also provided to the EIA Unit of the DEA/MET.

Management system

The MDP must be implemented in an efficient and systematic way. For each annual cycle, an *Annual Work plan* and a *Budget* will be prepared. This work plan will, as far as practical, follow the sequence of topics listed under parts 3 & 4 in the Plan. The work plan should cover:

- **Routine management issues**, such as managing water points, law enforcement, and extension work, etc.

- **Development issues**, such as tourism developments, wildlife reintroductions, etc.
- **Monitoring activities**, to collect, store, analyse and interpret information for adaptive management, covering such things as key biodiversity indicators, tourism and industrial impacts, etc.
- **Research needs** based on the identification of priority information and knowledge gaps, with appropriate ways of implementing such research.
- **Administration**, including work plan & budget preparation, reporting and meetings.

Progress on the implementation of the annual work plan and a financial report against the approved budget should be presented at each **Consultative Forum** meeting. These will be standing agenda items, and the reporting format should follow the sequence of issues and timing of the work plan.

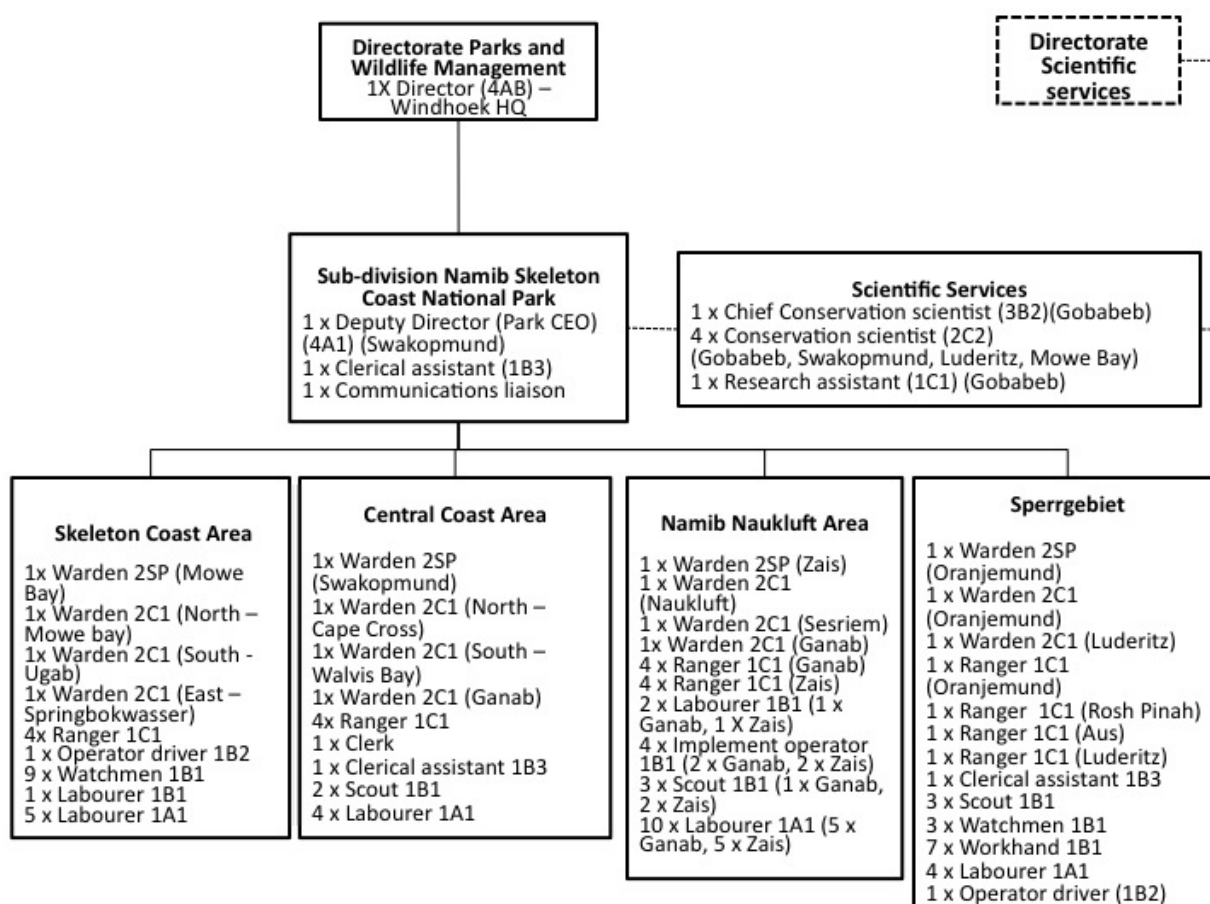
At the end of each annual cycle, an *Annual Report* and *Financial Report* will be prepared, plus a draft work plan and budget for the following year. The Annual Report will use the format of the work plan, and include cumulative (time-series) information from the monitoring programme. The cumulative information, showing trends over time, will be used to adaptively manage the Area. This information will also be used, together with the direction provided by the MDP, to prepare the next Annual Work Plan and Budget, both of which, together with the past years technical and financial reports, will be tabled for review and adoption by the **Strategic Forum**.

QuickTime™ and a
decompressor
are needed to see this picture.

Institutional arrangements

Because the Park consists of marine and terrestrial components, the intertidal coastal zone, its biota and the species that transcend the marine / terrestrial interface are managed jointly by the MET and MFMR under agreed co-management principles and protocols that promote synergy, efficiency and elevated conservation management, monitoring and protection of habitats, processes and species. The intertidal co-management approach is a model of collaboration with clear benefits to the ecosystem and responsible institutions. Moreover, the two ministries shall jointly appoint Honorary Wardens who will assist with monitoring, surveillance, information dissemination, stakeholder engagement and law enforcement.

The proposed MET staff structure for the SCNP appears below.



The proposed MFMR staff structure for the SCNP appears below.

To follow

The management and decision making structure is as follows:

QuickTime™ and a
decompressor
are needed to see this picture.

The **Strategic Forum** shall meet once a year, with the three institutions represented by Minister and Permanent Secretary level, and the Kunene Region represented by the Governor and appropriate Councilors, while NGOs at the coast will select a person to representative the interests of Namib-based conservation Civil Society organisations.

The SF will review and accept/reject/require changes to the park's Annual Report and next years Work Plan, Budget and proposed amendments to the Management and Development Plan, all of which shall be delivered by the Management Committee. The Management Committee shall also serve as the secretariat of the SF, produce the agenda a month before the meeting and the minutes within one month of the meeting having taken place.

The **Consultative Forum** will play an advisory role, and should meet at least four times each year. Its membership is suggested in the organogram above, but this can be an inclusive structure that welcomes newcomers who may have insights and something to offer to the park in terms of ideas and support. This CF is the Parks formal mechanism for consulting with key stakeholders and building an all-inclusive team approach towards park management and development. It also promotes a broad-based feeling of ownership about the park. The main purpose of CF

meetings is to track progress towards meeting set objectives (e.g. annual work plan), solving problems and capitalizing on opportunities that may arise.

At the CF meetings, the representatives will brief each other on their activities and plans, and exchange views on how best their respective sector interests might be accommodated in the park, and how they may contribute to the management and development of the park. The Management Committee should 'bounce ideas' off the CF and their advice should be carefully considered. The Management Committee shall serve as the secretariat of the CF, produce the agenda a month before the meeting and the minutes within one month of the meeting having taken place. Minutes of all CF meetings must be copied to the SF for their information.

The Management Committee is responsible for operational decision-making, and it shall consist of the senior (coastal-based) staff from MET and MFMR. Both ministries should include law enforcement, resource management and scientific services personnel on their teams. This committee must meet monthly so that the co-management institutions are regularly in contact with each other, and it must strive to achieve integrated management, avoiding wherever possible sectoral conflicts and unnecessary 'turf wars' - their responsibility is co-management. The chairperson of the meetings shall rotate every year, with the institution chairing providing the secretariat. Minutes of all MC meetings must be copied to the CF and SF for their information.

Given the specific national mandates for MET and MFMR, it is logical that the former will handle management on land (above high water mark) while the latter will manage the ocean component (below low water mark). The intertidal zone will require shared management on a roughly equal basis, depending on availability of personnel and other resources. Important is that there is complementarity between these institutions, NOT duplication and NOT competition. Suitably qualified MET personnel shall be empowered to enforce fisheries legislation, and suitably qualified MFMR personnel shall be empowered to enforce environmental and conservation legislation.

The **Honorary Wardens** (HWs) are an important component of the team, and the target should be 20 for the SCA, covering conservation, recreation and tourism components. The habitats that need to be covered

by HW expertise includes marine and coastal, desert ecosystems, wetlands. The HWs should be present/active in various locations in the park (e.g. outlying lodges, tourism concession areas, public recreation areas, and the marine environment).

They must receive appropriate training and be appointed for three years, renewable for further 3-years terms depending on their performance and commitment. The criteria for their selection include:

- Commitment to the conservation and management of the Park, and to assist the authorities in the implementation of this Management and Development Plan.
- Knowledge of the coastal, desert and marine environments
- Knowledge of the law and successful completion of the required training.
- Integrity and good standing in society (law abiding and no criminal record).
- Presence in the area (regular traveler through the area)
- Own transport (car, quad-bike, boat, aircraft, bicycle), communication means (e.g. cell phone), positioning equipment (e.g. GPS), digital camera and willingness to use them for the good of the park
- Ability to deal with people firmly but fairly, including law-breakers
- Team player.

The Honorary Wardens shall have the following powers:

- To provide information on the MDP, zonation and regulations of the SCA and on the Namib-Skeleton Coast National Park
- To inform people who break the law that they are in contravention of the above, and request them to immediately comply
- To stop a person and search a vehicle, boat or aircraft, providing there is a reasonable suspicion that the person has been involved in an illegal activity
- To demand a persons name (as above)
- To inspect a suspects luggage (in search of any illegal items, such as fish, shellfish, bait, venison, live animals, plants, etc.)

- To count and/or measure fish or shellfish to determine if they comply with legal requirements
- To issue an offender with an official warning.
- To report an offender to the authorized law enforcement agencies, whose task it is to perform an arrest/fine as the Case may be.

Actions	Timing	Record of progress
1. Establish the Strategic Forum and agree on their TORs	Mid 2009	
2. Establish the Management Committee and agree on their TORs	mid 2009	
3. Establish the Consultative Form and agree on their TORs	Late 2009	
4. Prioritise areas, issues, species requiring co-management approaches, and agree on areas, issue, species that should rather be managed sectorally	End 2009	
5. Establish practical and efficient operating procedures for collaboration, communication and reporting.	mid 2009	
6. Through the offices of the PS of the two ministries, appoint Honorary Park Wardens, provide them with TORs and relevant training and issue them with IDs, operating procedures and warning and confiscation books.	End 2009	

Notes:

.....

.....

.....

.....

.....

.....

Part 1: Vision, Goal and Objectives

1.1 Vision

To manage the Skeleton Coastal Area of the Namib Skeleton Coast National Park with minimum interference, to maintain essential ecological processes, life support systems and biotic diversity in as natural and unaltered a state as possible. To rehabilitate degraded areas back to as near as possible their original state. To develop and promote non consumptive utilisation of the park and its resources, without destroying the unique wilderness aspects, for the benefit of all Namibians in particular and humankind in general in perpetuity.

1.2 Goal

To wisely manage, rehabilitate and sustainably develop the land and natural resources of the SCA within an integrated "park and people" landscape matrix of highly protected globally significant biodiversity and multiple use areas appropriate to achieving a balance between protection, recreation and sustainable business development, and to pass these on to future generations in productive, diverse, aesthetically attractive and healthy condition, on an economically sound footing and as part of a larger co-managed landscape that is contributing significantly to the sustainable development of the region and nation.

1.3 Objectives

- To manage coastal and marine ecosystems so that they can support limited and controlled recreational angling and mid to high-end beach tourism on a sustainable basis
- To accommodate the development of tourism and residential facilities at selected sites, ensuring that these are designed to reflect the unique character of the Namib Coast
- To guide and manage high-impact land uses including prospecting and mining, ensuring compliance with relevant Namibian legislation and international best practice
- To protect specific natural habitats, notably lichen fields, dune hummocks, Damara tern breeding areas, seal breeding areas,

wetlands and, where necessary and feasible, to restore and rehabilitate degraded systems to their natural productive states.

- To establish strong co-management partnerships with sister ministries (Mines & Energy, Fisheries & Marine Resources), Regional Government, private sector (e.g. mining, tourism) so as to enhance the management and viability of the area.
- To link and seamlessly integrate the management and development of the Skeleton Coastal Area with the greater Namib Skeleton Coast National Park.

Part 2: Management units and zonation

2.1 Area background

The Skeleton Coast Area will be reproclaimed as part of the Namib Skeleton Coast National Park (NSCNP). The NSCNP will be proclaimed jointly by MET and MFMR under the authority of the Parks and Wildlife Act of **xxxxx**, and the Marine Resources Act, 27 of 2000. The NSCNP will consist of the following 4 administrative areas, each with terrestrial and marine components that are managed jointly and seamlessly:

- The Skeleton Coast Area
- The Central Coastal Area (encompassing the Walvis and Recreation Areas),
- The Namib Naukluft Area, and
- The Sperrgebiet Area.

The SCA in turn will have two sub-components, namely south (Ugab - Torra) and north (Torra - Kunene).

The SCA boundary is defined by the Nature Conservation Ordinance No. 4 of 1975 as follows:

"From a point where the common border between the Republic of Namibia and Angola intersects the coastline of the Atlantic Ocean, generally eastwards along the said common border, being the middle of the Kunene River, to a point where it intersects the +100 600 metre y-co-ordinate line on the L.O. 22/13-trigonometrical survey system; thence southwards in a straight line to a point where the +92 200 metre y-co-ordinate line on the said system intersects latitude 18°00'00" south; thence south-eastwards in a straight line to a point where the -5 300 metre y-co-ordinate line on the said system intersects the northern bank of the Hoanib River; thence north-eastwards along the said bank to a point where longitude 13°07'02" east intersects latitude 19°21'27" south; thence south-eastwards in a straight line to a point where longitude 13°57'33" east intersects latitude 21°00'09" south; thence along the extension of the last-mentioned straight line to a point where it intersects the southern bank of the Uchab River; thence south-westwards along the said bank to a point where it intersects the low-water mark of the Atlantic Ocean; thence north-westwards along the said low-water mark to the point of beginning."

PROPOSED NEW BOUNDARIES

"From a point where the common border between the Republic of Namibia and Angola intersects the coastline of the Atlantic Ocean, generally eastwards along the said common border, being the middle of the Kunene River, to a point where it intersects the +100 600 metre y-co-ordinate line on the L.O. 22/13-trigonometrical survey system; thence southwards in a straight line to a point where the +92 200 metre y-co-ordinate line on the said system intersects latitude 18°00'00" south; thence south-eastwards in a straight line to a point where the -5 300 metre y-co-ordinate line on the said system intersects the northern bank of the Hoanib River; thence north-eastwards along the said bank to a point where longitude 13°07'02" east intersects latitude 19°21'27" south; thence south-eastwards in a straight line to a point where longitude 13°57'33" east intersects latitude 21°00'09" south; thence along the extension of the last-mentioned straight line to a point where it intersects the southern bank of the Uchab River; thence south-westwards along the said bank to a point where it intersects the low-water mark of the Atlantic Ocean; thence generally westward into the ocean for a distance of 3 kms and then generally north-westward, maintaining a distance of 3kms from the low water mark to a point 3km seaward of the Kunene River mouth, and then back to the point of beginning."

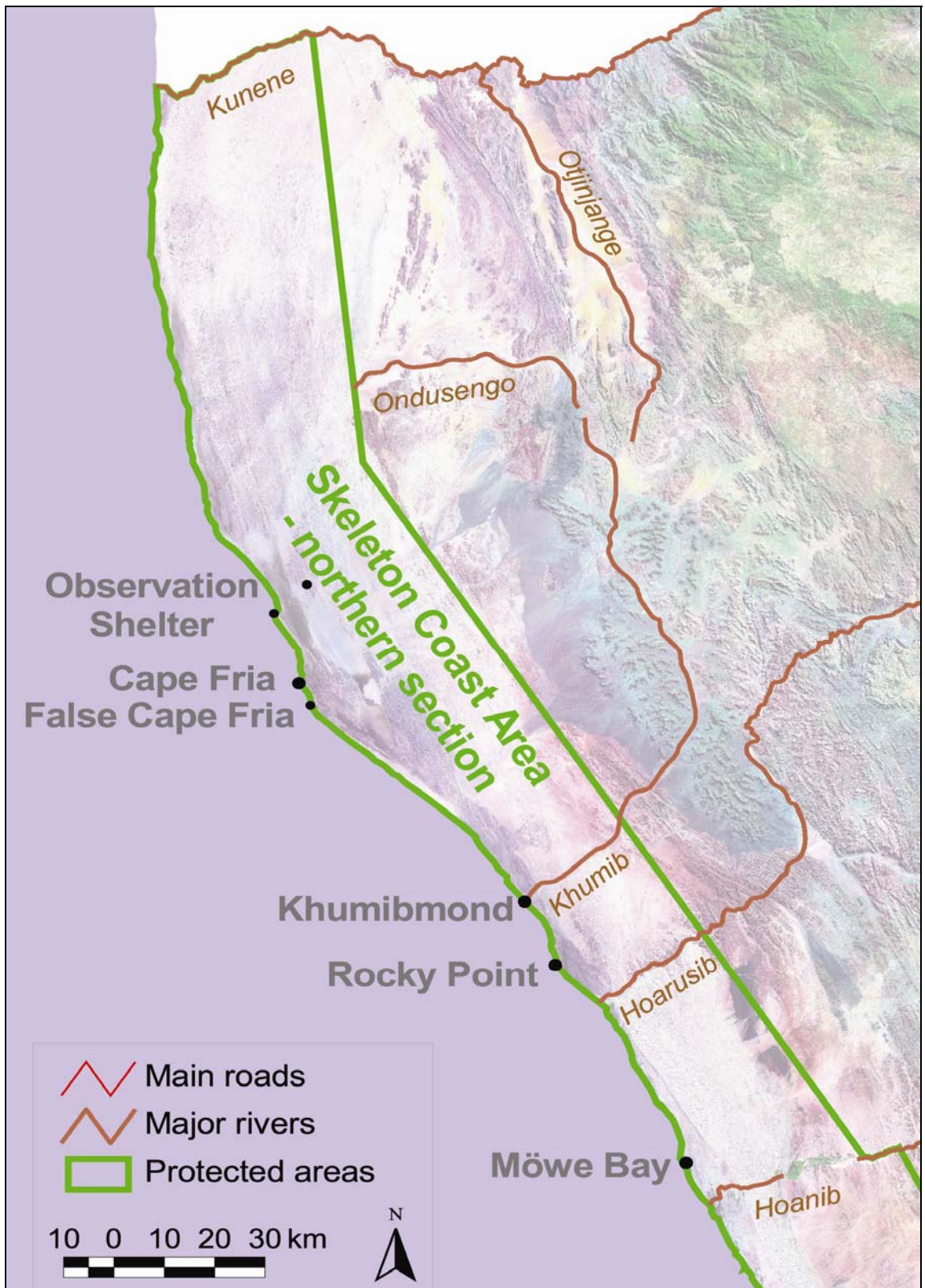


Figure 2: The northern section of the Skeleton Coast Area of the Namib-Skeleton Coast National Park

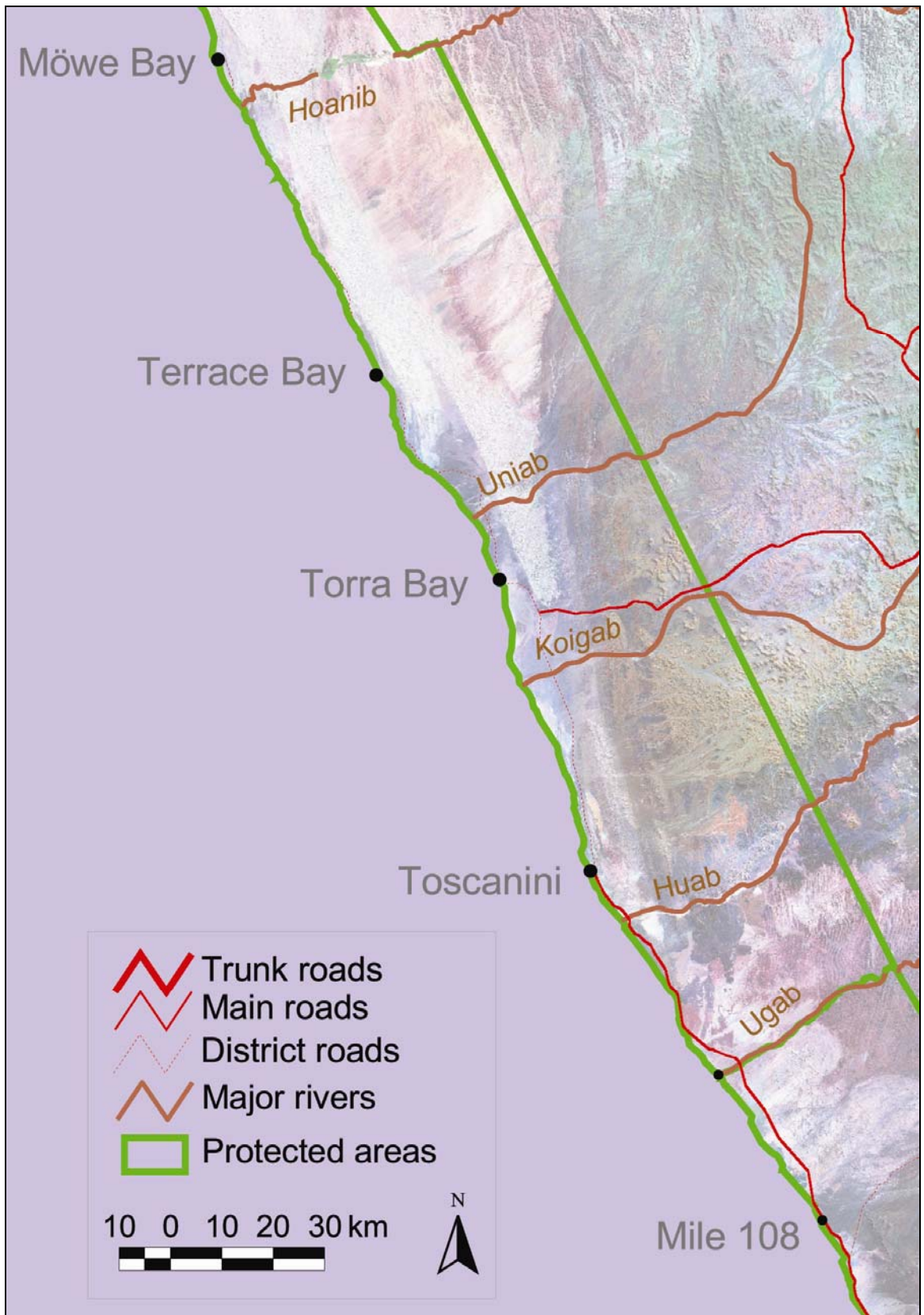


Figure 3: The southern Section of the Skeleton Coast Area of the Namib-Skeleton Coast National Park

2.2 Habitat units

The Skeleton Coast Area is a strip of land approximately 500 km's long and 30 to 40 km's in width situated on the Northern Namibian coastline between the Ugab River in the South and the Cunene River in the North. The park covers an area of approximately 16500 square kilometres. The marine component measuring 1km wide by 500 kms long adds a further 500 km², making the size of this component of the NSCNP 17000 km².

The coastal portion of the SCA covers two marine Biomes, the cold Benguela system in the south and the warmer tropical system in the north. Given that these two systems meet along the shores of the SCA there is another zone of marine importance where the Benguela and tropical systems meet. The littoral areas of the SCA support unique faunal and floral communities.

The SCA includes many areas of outstanding natural beauty and/or geomorphological and geological interest. These include the multi-coloured and mostly pristine gravel plains, extensive salt pans some of which are thought to cover ancient shipwrecks, Uniab alluvial fan formation, the Clay Castles in the Hoarusib River and the geological formations in the Ugab River Valley. There are also many areas of archaeological/ historical interest, including all present and past shipwrecks, shelters of early inhabitants and localities where early and recent explorers either lost their lives or struggled to survive the inhospitable coastline and desert.

The dunefields are the major habitat of a great variety of invertebrate and vertebrate species, some of them endemic to the SCA, many endemic to the Namib and several Namibian endemics. At least 90% of the world population of *Angolasaurus skoogi*, the world's largest totally herbivorous lizard, occurs in the SCA.

The intertidal and littoral zones along the northern coast of the SCA supports a unique invertebrate diversity as well as being the change-over from the cold Benguela system to the warmer tropical influence.

The Cunene River estuarine system supports: a significant White Pelican population, is an important stop over for migrating palearctic

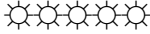

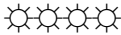

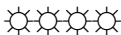
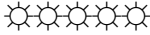
waders, the only population in Namibia of the Nile Soft Shelled Terrapin, a population of Nile Crocodiles and a large number of marine Green Turtles. The Cunene Mouth is one of only two permanent river estuaries in Namibia and was previously proposed as a RAMSAR site.

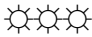
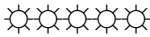

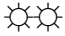
The Marine Terraces and coastal Gravel plains are extremely sensitive and have a high aesthetic value. They are also important breeding grounds for Damara Terns and some other endemic passerine bird species.

The riparian forest of the ephemeral Hoarusib, Hoanib, and Ugab Rivers provide habitats for many reptile, bird and mammal species. Another eleven major ephemeral rivers flow into the SCP and provide important habitat and food.

Despite covering a relatively small area within the vast Namib-Skeleton Coast National Park the SCA has a large number of different habitats, which explains why it is given such high conservation consideration. For the purpose of this management plan, the SCA is divided into Coastal, Terrestrial and Urban Categories. A sensitivity rating is provided below, ranging from ☀ = low sensitivity to ☀☀☀☀☀☀ = highly sensitive and / or of high environmental value.

Category	Habitat	Sensitivity	Notes
Coastal	Sandy shore	☀☀☀☀	Generally moderately sensitive because sandy beaches are dynamic, relatively robust ecosystems. However, the northern coast supports a unique invertebrate diversity as it is the change-over from the cold Benguela system to the warmer tropical influence of the Angola current
	Rocky shore	☀☀☀☀☀☀	Generally slightly more sensitive because of high biodiversity.
	Littoral shelf above high water mark	☀☀☀☀☀☀	Moderately sensitive because of presence of invertebrates, plants and shorebirds, some of which nest here. Dune hummocks especially important for biodiversity - and they are vulnerable to disturbance by off-road driving and mining.
	Kunene mouth	☀☀☀☀☀☀☀☀	The Kunene mouth: <ul style="list-style-type: none"> • Supports a significant White Pelican population, • is an important stop over for

			<p>migrating palearctic waders and is also a proposed RAMSAR site.</p> <ul style="list-style-type: none"> • is the only place in Namibia where the Nile Soft Shelled Terrapin occurs, • has a population of Nile Crocodiles and a large number of marine Green Turtles • is one of only two permanent river estuaries in Namibia.
Terrestrial	Damara tern breeding sites		Gravel plains used as breeding areas by Damara Terns are rated as highly sensitive because of the Tern's endemic and Near Threatened status.
	Coastal gravel Plains		These are the gravel plains that are strongly influenced by fog occurrence. These gravel plains are fragile systems that show little recovery after long periods (centuries) and are thus rated as sensitive. The plains in the Toscanini area, between Terrace and Mowe Bay, around Sarusas and Cape Frio especially important visually.
	Inland gravel plains and associated drainage lines		These are the vast plains inland of the coastal dunes and that are only occasionally subjected to fog. These areas support annual grasslands (and plains game) after rain events. The river washes have relatively large trees that provide nesting sites for vultures and other birds. These plains are visually important as a vast open landscape that provides a 'sense of place' that epitomizes the "Namib experience".
	Lichen fields		Occur on gravel plains and hills close to the coast. Most lichens are endemic, important food for various forms of wildlife, and highly sensitive to impacts from off-road driving and mining.
	Coastal rocky hills		Mainly Springbokwasser, Terrace Bay, Sarusas, Hartmann Beacan and Agate Mountain areas - biodiversity is strongly influenced by fog. These areas support lichen and other important plants. Vulnerable to offroad driving and mining.
	Ephemeral Rivers (Ugab, Huab, Koichab, Uniab, Hoanib, Horausib, Khumib, Sechomib, Nadas and Engo)		These are all linear oases that are the 'highways' through which wildlife migrate east-west, and from which wildlife undertake foraging forays into the proper desert. By providing relatively lush habitat (water and vegetation) they support 'desert animals' of great variety that are world famous as tourist attractions. These rivers are vulnerable as they are also linear tourism products - resulting in impacts on wildlife and sense of place.

	Sand Dune Belt		Relatively insensitive but support various forms of desert wildlife, including reptiles and insects. At least 90% of the world population of <i>Angolasaurus skoogi</i> , the world's largest totally herbivorous lizard, occurs in the SCA dunes.
	Small ephemeral fountains and springs (e.g. Uniab delta, Oasis, Auses, Hunkab, Okau, Gantias, Khumib spring)		Mostly underground flow concentrates moisture in these small areas, supporting plants and biodiversity. Because these sites are remote and usually surrounded by vast expanses of inhospitable desert, they are disproportionately important to wildlife that depend to a greater or lesser extent on water. Most are 'safe' but all are vulnerable to over-abstraction of the aquifers that underpin them.
	Vegetated dune hummocks		Extend all along the coastline, right to the Kunene mouth. Vegetated by a variety of plants (e.g. Salsola, zygothymum, etc), and an important habitat for various types of wildlife, some endemic. Vulnerable to offroad driving and mining.
	Salt pans		Important visually (sense of place) and in some cases support breeding Damara terns. Some (e.g. Cape Frio) thought to hide old shipwrecks. Tracks can last for years on this substrate, but they are relatively sterile in terms of biodiversity.

2.2.1 Actions	Timing	Record of progress
1. Review and fine tune habitat Categories	By end 2009	
2. Prepare poster for staff, residents and visitors on the habitats (land forms and vegetation types) of the SCA, with photographs and sensitivity ratings	By mid 2010	

2.3 Zonation

2.3.1 Principle: The matrix of landscapes and habitats are optimally managed and sustainably used within the SCA, based on their sensitivity, conservation importance, recreational potential

and business opportunity, in that order. This will be achieved by means of a Zonation Plan. This plan must also take into account the role that the SCA plays within the Namib-Skeleton Coast National Park, the greater Namib co-management Complex and the country. It must also remain dynamic and responsive to the potential for future opportunities, partnerships, linkages and corridors, and to developing the economic potential of the greater area within the context of biodiversity and landscape conservation, and sustainable development.

Owing to the physical shape and width of the SCA it does not constitute a core wildlife conservation area. The SCA does, however, provide a safe haven and food resource at certain times of the year.

2.3.2 Vision: To zone the SCA for enhanced conservation management and appropriate utilization, to minimize potential conflicts between activities and to facilitate potential "bigger picture" conservation and development goals for the area.

2.3.3 Zones:

Zonation is based on best available information on environmental sensitivity, biodiversity status and conservation priorities. Around this are built the recreational use of the area by residents and visitors, business activities and opportunities, and infrastructure development.

The following zones have been identified and mapped, based upon IUCN categories (Figure 4):

- Strict nature reserve (IUCN category 1a)
- National park (IUCN category 2)
- Protected landscapes / seascapes (IUCN category 5)

Zones	Activities	Specific application in the SCA
Strict nature reserve IUCN category 1a	<ul style="list-style-type: none"> • Highly sensitive and high value conservation / biodiversity areas set aside for sensitive and low non-intrusive scientific study 	Areas of high endemnicity with highly range-restricted species: <ul style="list-style-type: none"> • All lichen fields and Damara tern breeding areas • All wetlands - specifically the Uniab delta, lower Hoanib

	<ul style="list-style-type: none"> • No or minimal mechanized access - except for officials on duty. • No permanent structures • No overnighting except by officials on duty 	<p>river (from the mouth to the dunes), Oasis, Auses, the Hoanib floodplain, the lower Hoarusib (from the poort till the park boundary), Sarusas spring, Okau fountain and the Cunene River mouth.</p> <ul style="list-style-type: none"> • All vegetated dune hummocks • All inselbergs, notably Sarusas ridges, Agate Mountain • The entire intertidal zone (i.e. from the spring low water mark till the spring high water mark) • The Clay Castles in the Hoarusib • The geological formations in the lower Ugab valley
<p>National park</p> <p>IUCN category 2</p>	<ul style="list-style-type: none"> • Managed for conservation and controlled tourism • Mechanised access permitted • Overnighting only at designated sites 	<p>Whole SCA proclaimed under this category. The other categories are managed as land-use zones within the overall National Park. Where no other zone is provided, the zone is taken to be "National park"</p>
<p>Protected landscapes / seascapes</p> <p>IUCN category 5</p>	<ul style="list-style-type: none"> • Relatively open access for public enjoyment • Generally higher intensity and lower regulatory areas • Add to welfare of local communities 	<ul style="list-style-type: none"> • Terrace and Torra Bay angling areas. 4x4s allowed, but other than the beach area, they must stay on tracks. No overnighting except in the Terrace and Torra Bay demarcated areas. • Toscanini coastal village

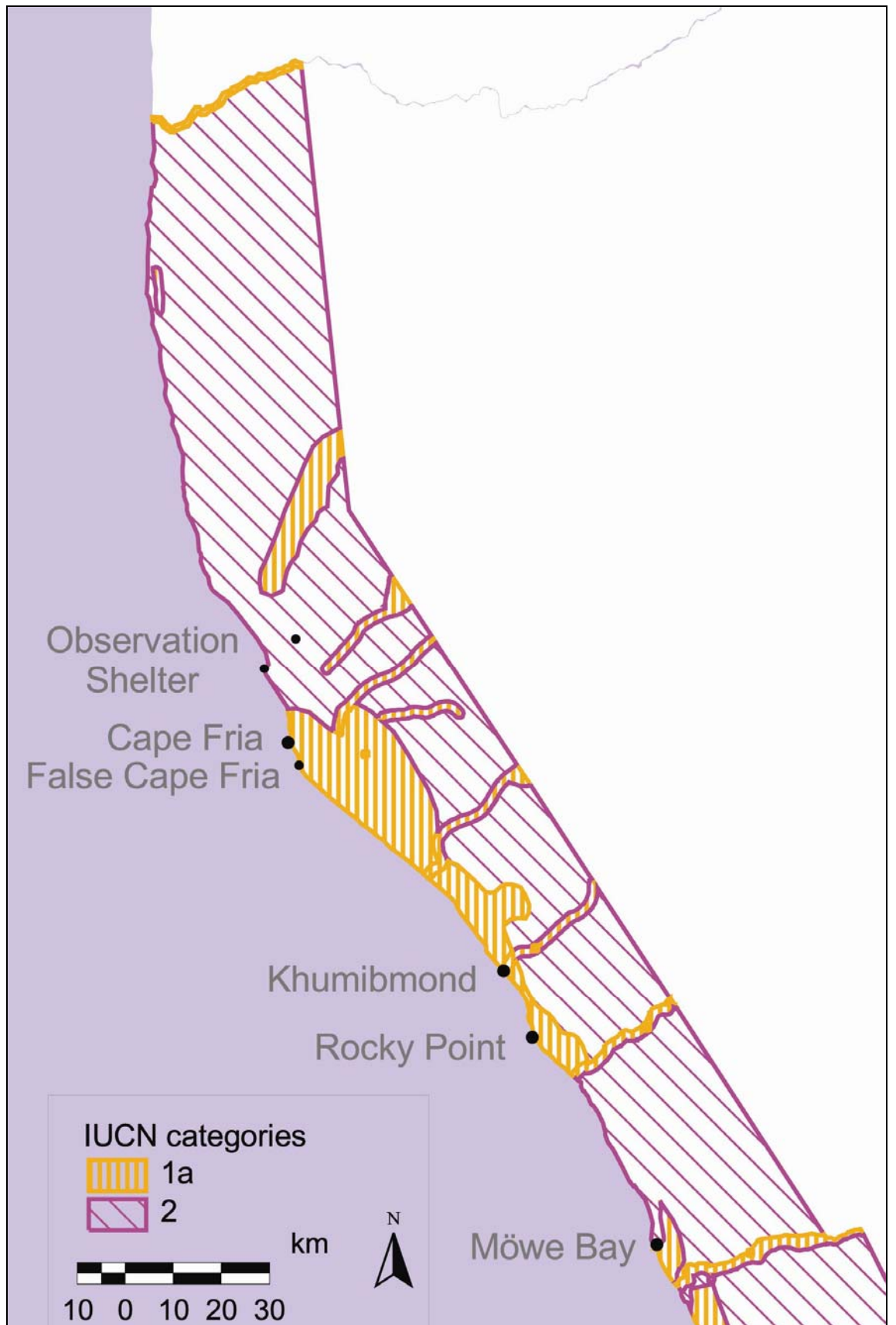


Figure 4a: IUCN zones for the northern area of the SCA (see page 39-43 for explanation of IUCN zones).

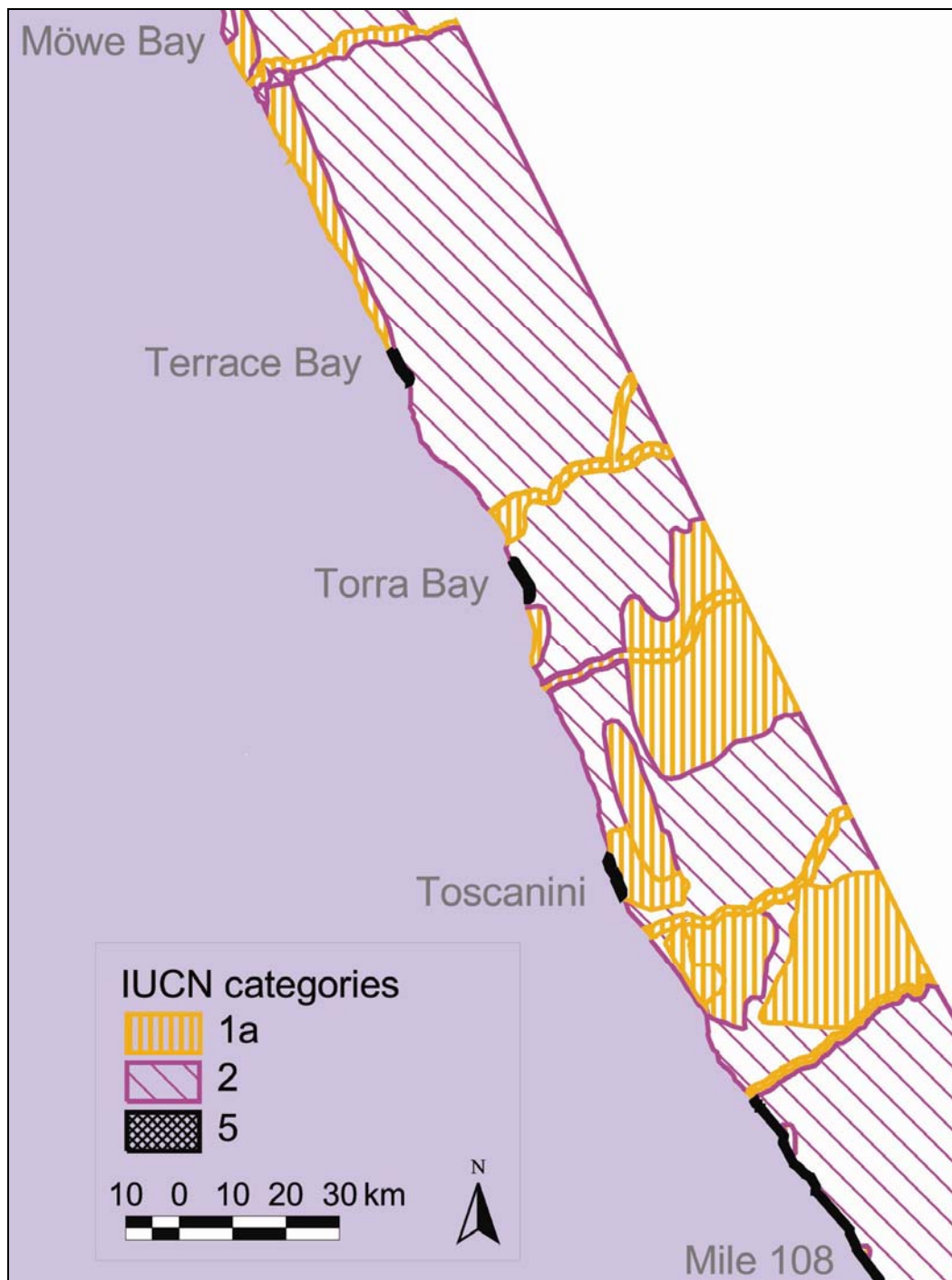


Figure 4b: IUCN zones for the southern area of the SCA (see page 39-43 for explanation of IUCN zones).

2.3.3.2 Recreational Areas

The recreational areas for the SCA are as follows:

- Terrace Bay and Torra Bay angling areas. 4x4s allowed, but other than the beach area, they must stay on tracks. Bikes not permitted anywhere except on a proclaimed road. Walkers

and joggers may exercise anywhere within the Terrace and Torra areas.

- The Toscanini beach village is set aside for holiday-making, where residents may drive on designated tracks and pursue angling from the beach. Walkers and joggers may exercise anywhere within the Toscanini area.
- Anglers (rock and surf only) must obtain permits from MFMR.

2.3.3.3 Business Areas

The business areas for the SCA are as follows:

- Skeleton Coast Tourism concession
- Kunene Mouth Lodge
- Terrace Bay Lodge
- Filming of nature documentaries (anywhere but strict guidelines to be followed - see **appendix B**)

2.3.3.4 Infrastructure, residential and industrial

- Lodges (as noted above)
- MET Offices and residences (Mowe Bay, Springbokwasser, Ugab).

2.3.4 Actions	Timing	Record of progress
1. Complete list of allowable activities per zone	By end 2009	
2. Prepare poster for residents, visitors and officials on zonation and activities	Mid 2010	

Notes:

.....

.....

.....

.....

Part 3: Management targets

3.1 Landscape approach

3.1.1 Principle: Open, contiguous and ecologically optimal landscapes and seascapes and their interface are maintained and managed to ensure seamless linkages between the SCA and adjacent terrestrial and coastal ecosystems.

3.1.2 Vision: To maintain and, where relevant, expand the area under conservation management, and manage for larger landscape values, through partnership, with particular emphasis on:

- (i) east-west linkages between the terrestrial, coastal and marine ecosystems, in partnership with the MFMR and neighbouring land-holders (especially conservancies);
- (ii) linkages with neighbouring Central Area of the Namib-Skeleton Coast National Park.
- (iii) Linkages with Iona National Park in Angola.

3.1.3 Strategies:

- a) Work with MFMR to identify coastal and marine protected area collaboration adjacent to the SCA, with priority attention to Cunene Mouth, Cape Frio Seal Colony and spawning areas for angling fish species.
- b) Establish seamless collaboration and cooperation procedures and practices with other management units in the NSCNP and neighbouring areas.

3.1.4 Actions	Timing	Record of progress
1. Establish an effective collaborative framework between MET and MFMR to plan and harmonise terrestrial and coastal/marine protected areas and their rational and efficient management, including a focus on collaboration and co-management	2009 and ongoing	
2. Establish a planning,	2009 and	

management and monitoring framework for collaboration, cooperation, mutual support and harmonization with other management units in the NSCNP and neighbouring areas.	ongoing	
---	---------	--

Notes:

.....

.....

.....

.....

3.2 Co-management

3.2.1 Principle: The SCA is planned, managed, developed and monitored using a collective co-management approach that fully involves civil society, business, and government agencies.

3.2.2 Vision: To develop local co-management mechanisms that fully integrate MET and MFMR, other relevant government agencies and civil society (including business), into all aspects of the management and development of the SCA in full collaboration and "smart partnerships", and with the respective partners being empowered to contribute to their full competitive competencies.

3.2.3 Strategies:

- a) To establish a strategic SCA Steering Body (the SF) that provides overall direction, assesses progress and performance and helps to remove constraints, and comprises representation at senior levels of relevant stakeholders including Regional Council, key line ministries, business sector, community and civil society sectors, environment and development sectors, etc.

- b) To establish a practical Consultative Forum that provides ongoing operational assistance, guidance, support and feedback, and comprises practitioners in relevant sectors such as business, NGOs, line ministries, community groups, etc.
- c) To establish a team of Honorary Wardens to work with MET and MFMR to help implement this MDP, legislation, regulations and zonation.
- d) To establish procedures for planning, managing, developing and monitoring the SCA seamlessly with the adjacent Central Area of the Namib-Skeleton Coast National Park, and with the coastal and marine ecosystem.
- e) Together with the Central Area of the Namib-Skeleton Coast National Park, engage pro-actively with willing neighbours, to explore the establishment of a co-management and development approach for the "Greater Namib-Skeleton Coast Complex" to enhance the development of a shared vision, common objectives and agreed principles, and promote a common management approach, as well as to facilitate park-to-neighbour liaison, with particular focus on establishing linkages between the Namib and the escarpment, to reinstate wildlife movement patterns and to help counter the potential impacts of climate change.
- f) To work closely with Regional Government, organized business and interest groups, communities, NGOs and the media to keep people informed of developments, to invite their input and participation in these and future evolving initiatives.

3.2.4 Actions	Timing	Record of progress
1. Establish a SCA Strategic Forum with clear Terms of Reference	By mid 2009	
2. Establish a practical SCA Consultative Forum with clear Terms of Reference	By mid 2009	
3. Appoint a team of Honorary Wardens with clear TOR and identification mechanisms, ensure that these appointments are well advertised and their responsibilities and authority well publicized and that the	By end 2009	

appointees receive orientation and training on their roles and responsibilities		
4. Establish close and collaborative working relations and clear procedures for seamless collaboration between the different Management Areas of the Namib-Skeleton Coast National Park	Mid 2009	
5. Establish close and collaborative working relations and clear procedures for seamless collaboration between MET and partners on the terrestrial landscapes with MFMR in the coastal and marine ecosystems	Mid 2009	
6. Where relevant, participate in the development of a Greater Namib-Skeleton Coast Complex with park neighbours	Mid 2010	
7. Create an inclusive, participatory environment within the SCA where all interested stakeholders can contribute ideas, energy and time; foster a spirit of volunteerism; and keep everyone well informed of activities and progress in the SCA	Ongoing	
8. Initiate a feasibility assessment for the greater Namib-Skeleton Coast Complex (Park and neighbours) to become registered as a World Heritage Site.	Mid 2010	

Notes:

3.3 Biodiversity conservation

3.1.1 Principle: The comprehensive diversity of landscapes, habitats, plants and animals indigenous to the SCA are protected and both ecosystem functioning and natural evolutionary processes take place effectively.

3.1.2 Vision: To protect and conserve the diversity of landscapes, habitats and biota of the SCA in healthy and productive condition within the context of the Namib-Skeleton Coast National Park and the Greater Namib Area.

3.1.3 Strategies:

- a) Because of the large open systems involved, and the intention to create linkages with adjacent ecosystems (e.g. coastal and marine to west and escarpment belt to east), ecosystem management should be minimal, and a largely hands-off approach should be adopted, but 'hands-on' in terms of preventing and/or minimizing damage to important habitats and species in the park.
- b) Should it become necessary to apply active management, interventions should aim to manage the arid ecosystems for long-term diversity, health, productivity and climate change resilience and adaptation, by ensuring connectivity, preventing over use of all components, including water, fauna and flora, landscapes, etc.
- c) Allow and promote variability in management and "patchiness" in ecosystem expression in response to variable climatic conditions and ecosystem functioning.
- d) Build up a good monitoring record of ecological and bio-climatic information, including the diversity and abundance of various species in different taxa, including the less studied lower plants, invertebrates, etc.

- e) Monitor the health of populations of species high on the food chain (e.g. key predators and scavengers), flagship and key-stone species and other strategic key indicator species (including indicator species for early warning of climate change impacts) - if these species prosper it follows that the base of the food chain is likely to be diverse and in good condition.
- f) Monitor key habitats such as wetlands, Important Bird Areas and Important Plant Areas.

Priority habitats and species are:

- The westward flowing rivers, which are linear oases that provide crucial habitat for a great diversity of wildlife
- The intertidal and subtidal zones - both of which are crucial to fish breeding, shellfish populations and the coastal tourism industry
- Various fish species, especially those targeted by anglers (galjoen, steenbras, kabeljou, black-tail). Commercially important pelagics occur mostly beyond the boundary of the NSCNP.
- Lichen fields - important to the gravel plains food chain
- Dune hummocks - habitat for various invertebrates, including endemic species
- Damara terns - endemic seabird, red data species, vulnerable to coastal development and other human impacts
- Seabirds - especially migrants such as albatross that are vulnerable to fish depletion and harmful fishing practices (occur mostly beyond the border of the park)
- Seals - important marine predators
- Hyaena and jackals - coastal scavengers and part of the Namib Coast 'image'
- Coastal shorebirds, both resident and migratory
- Wetlands - especially the lower Cunene River and the various springs/fountains/seeps in the westward flowing rivers.

- g) Monitor human impacts of landscapes, ecosystems, habitats and species with particular attention to fragile and high value components of the system, and human activities known to have significant impacts.
- h) Participatory approaches for monitoring should be used, fully involving relevant stakeholders.
- i) No poisons or pesticides (or other toxic chemicals) will be used in the park.

3.3.4 Actions	Timing	Record of progress
1. Set up (where necessary), implement and support monitoring systems for ecosystem health, key habitats, and biodiversity building on existing systems used elsewhere (e.g. Event Book system) and continuing with long-term data series (e.g. wetland bird counts)	During 2009	
2. Identify priority baseline information needs	During 2009	
3. Set up, implement and support monitoring systems for human impacts on important components of the SCA	During 2009	
4. Ensure that no toxic substances, poisons or pesticides are used in the SCA	Now and onwards	
5. Clarify seal harvesting rationale so that a coherent policy is established and disseminated	Mid 2009	

Notes:

.....

.....

The following components are subsets of the Biodiversity Conservation Strategy, and provide more details on specific components.

3.3.a Internationally important wetland sites – Cunene Mouth

3.3.a.1 Principle: This wetland area of international significance with high numbers of wetland bird species, including Red Data species, are afforded the highest levels of protection that legislation, zonation and management practices can provide.

3.3.a.2 Vision: to protect, monitor, understand, manage and conserve the lower Cunene, and its ecosystem functioning, with particular attention to the wetland birds, turtles, crocodiles, fish and various invertebrate species.

3.3.a.3 Strategies:

- a) Protect the lower Cunene River from invasive and destructive land use, such as mining
- b) Establish and build strong relations with Angolan authorities so that compatible strategies are followed on both sides of the river.
- c) Ensure that long-term monitoring of the health of this wetland continues, using bird counts, water quality and other appropriate means, and via participatory and outsourced mechanisms.
- d) Establish an early warning system to mobilize appropriate action in the event of problems being identified, either through monitoring or from incidental information.
- e) In collaboration with Angolan authorities and other partners (e.g. PJTC), track upstream activities that may have implications for the lower Cunene (e.g. dams, irrigated agriculture, aquaculture, bulk abstraction).

3.3.a.4 Actions	Timing	Record of progress
1. Engage Angolan authorities and establish a communication and joint management system	2009 and ongoing	
2. Plan an annual trip to the Cunene for selected volunteers who will assist with a count/survey of all the most important biological indicators.	2009 and ongoing	
3. Engage with MME to ensure that the Cunene mouth is off-limits for prospecting and mining,	Early 2009	
4. Initiate planning for lodge	mid 2009	

development at the mouth - include Angolan authorities so that the tourism product could be cross-boundary.		
---	--	--

Notes:

.....

.....

.....

.....

3.3.b Wildlife population management

3.3.b.1 Principle: A rich diversity of indigenous wildlife prospers within an open, dynamic and resilient ecosystem.

3.3.b.2 Vision: Wildlife population numbers will be managed, mainly through self-regulation, at levels where biomass Carrying Capacity is considered conservatively appropriate and sustainable, per species and for the total wildlife population, under different rainfall and range conditions. Mass mortalities during droughts will be avoided - mainly by working to establish open systems, particularly west-east. Population fluctuations due to good breeding and slow attrition during wet and dry cycles, and from predation, will not be cause for concern.

No hunting or consumptive off-takes of terrestrial wildlife will be permitted within the SCA, other than as live capture for special reintroduction elsewhere.

3.3.b.3 Strategies:

a) Population trends, health (age and sex structures and body condition) and distribution of populations will be monitored as necessary, as part of the Namib-Skeleton Coast National Park monitoring process.

b) Wildlife management decisions will be taken in an adaptive manner, with a minimalist intervention philosophy, and based on good monitoring and research information, as may be decided from time to time.

3.3.b.4 Actions	Timing	Record of progress
1. Design and implement integrated monitoring systems for rainfall, vegetation condition and wildlife (numbers, age & sex classes and condition), making use of "Event Book" system	Design during 2010, implementation thereafter and ongoing	
2. Obtain and document historic information on wildlife diversity, numbers, extinctions and other relevant issue.	2010	
3. Proactively review information on key variables to determine if any management actions are necessary, and identify management options	Systems set up and tested starting 2011 and then ongoing	
4. Adaptively manage wildlife using a minimalist intervention approach and most relevant practices	As necessary	

Notes:.....

3.3.c Wildlife introductions

3.3.c.1 Principle: The historic diversity of wildlife and their full suite of interactions are reinstated, as far as is practically possible under prevailing conditions,

3.3.c.2 Vision: Re-introduce and/or augment as appropriate species that were locally indigenous within historic times provided these have a reasonable chance of survival under current conditions and are practically and socially acceptable.

3.3.c.3 Strategies:

- a) Carry out an assessment of species that historically occurred in the SCA of the Namib-Skeleton Coast National Park.
- b) Review which species that no longer occur, or occur at below optimal numbers, could be re-introduced under current conditions, and prepare a prioritized list.
- c) Be mindful that the SCA is on the extreme western edge of a number of species' ranges. In higher rainfall years such species may/would have moved westwards into the SCA of the Park, and in lower rainfall years they would have retreated eastwards into the escarpment. Once large, open areas have been secured, reintroductions into the greater area may be viable, but which would not be so if confined to the SCA. Thus take a larger picture view of wildlife reintroductions, and be mindful of the linear oases provided by the various westward-flowing rivers.
- d) Introduce wildlife in phases as per the list, and subject to rainfall and veld condition being adequate to enhance survival chances.
- e) Acquire wildlife from similar habitats (e.g. Namib and Karoo Transition ecosystem) for genetic integrity and optimal chances of success.
- f) Introduce wildlife in sufficient numbers to be viable, rather than having small token introductions.
- g) Where species are likely to recolonise or to augment existing populations by in-migration, allow this to happen rather than active reintroduction.
- h) No species exotic to the SCA of the Namib-Skeleton Coast Park will be introduced.

- i) No subspecies or components of populations from elsewhere will be introduced if there is any risk of genetic pollution to the indigenous populations' genetic integrity, and where suitable animals can be acquired from within the required gene pool.
- j) In the case of introductions that have a potential impact on residents and communities adjacent to the SCA, full consultations will take place prior to any introductions.

3.3.c.4 Actions	Timing	Record of progress
1. Carry out an assessment of historic distributions of wildlife in the SCA and adjacent areas of the Namib-Skeleton Coast National Park.	2010	
2. Based on the above and present-day viability and acceptability, develop and implement a phased reintroduction and augmentation plan (e.g. rhino in Kaokoveld).	2011 and ongoing	
3. Monitor introduced and augmented populations - numbers, breeding, sex and age ratios, distribution, etc.	From each introduction and ongoing	

Notes:.....

.....

.....

.....

3.3.d Alien plants and animals

3.3.d.1 Principle: The SCA is free of all invasive alien plants and animals.

3.3.d.2 Vision: No feral populations of alien plants and animals will be permitted within the SCA. Domestic species will only be permitted where these pose no threat of invasion, are under the full control of designated owners or are an integral part of the operation of the park (e.g. horses and Camels for wilderness trails), and where they pose no threat to the conservation of indigenous species and the integrity of the park.

3.3.d.3 Strategies:

- a) No aquaculture projects allowed in the SCA
- b) Establish a monitoring system for alien species, with particular attention to high-risk species and areas such as along rivers and drainage lines, roadways, mining areas, water points, etc.
- c) Manage feral populations of plants and animals as appropriate and practical including eradication where feasible.
- d) Monitor infestations/spread of the alien invasive mussel (*Mytilus galloprovincialis*) and initiate remedial action if appropriate and practical.

3.3.d.4 Actions	Timing	Record of progress
1. Manage and where practical eradicate invasive alien species throughout the SCA	2010 and ongoing	
2. Work with neighbours to eradicate alien plants from drainage lines entering the SCA	2010 and ongoing	
3. Follow up on cleared areas and remove regrowth/new seedlings	2010 and ongoing	
4. Monitor intertidal zones	2009 and ongoing	

Notes:.....

3.4 Coastal management

3.4.1 Principle: The intertidal coastal zone, its biota and the species that transcend the marine/terrestrial interface are managed jointly by the MET and MFMR under agreed co-management principles and protocols that promote synergy, efficiency and elevated conservation management, monitoring and protection of habitats, processes and species.

3.4.2 Vision: The intertidal co-management approach is a model of collaboration with clear benefits to the ecosystem and responsible institutions, such that the approach is expanded to the entire Namibian coast.

3.4.3 Strategies:

- a) A close and mutually supportive working environment will be created between the Park MET and MFMR institutions and their respective staff. To this end, a Park MET-MFMR Management Committee will be established.
- b) The above Committee will identify the key areas, issues and species that require joint monitoring and management.
- c) The above committee will establish operational principles, procedures and protocols for monitoring, managing and reporting on the areas and biota of mutual interest, as well as means of collaboration, communication and mutual support.

3.4.4 Actions	Timing	Record of progress
1. Establish a MET/MFMR Management Committee	Early 2009	
2. Establish practical and efficient operating procedures for collaboration, communication and reporting for identified priority areas and species.	Early 2009	
3. Explore ways of expanding collaboration and co-management where this would be beneficial to the ecosystem and to the partner institutions.	2010 and ongoing	

3.5 Recreational aspects

3.5.1 Principle: The SCA provides opportunities for high quality, low volume recreation for residents and visitors. As such the SCA is zoned to provide access to a restricted number of carefully selected recreational areas so as to avoid threatening sensitive and important habitats and species, as well as undermining 'sense of place'.

3.5.2 Vision: To provide strictly controlled and limited access for residents and visitors to different zones within the SCA for high quality recreational activities, with an emphasis on "responsible recreation in a fragile environment".

3.5.3 Strategy:

- a) Information on zonation, sensitivity of different areas and habitats, and the do's and don'ts within each zone of the SCA is widely publicized and made available to all interest groups, especially the Regional Council, NAMPOL, tourism sector, general public, other GRN organisations, parastatals, etc.
- b) Namibian police and other security personnel are asked to limit their presence in exclusive tourism areas to essential actions only, to refrain from angling and general recreation in closed areas, and to always remain on existing tracks only.
- c) The roles and authority of the Honorary Wardens are widely publicized.
- d) A set of information boards are erected strategically in the SCA providing good clear information on environmental parameters, zonation, land uses and responsible recreational behaviour.
- e) Any new tourism projects, or substantial changes to existing projects, must be subject to EIAs before being incorporated into the zonation plan of the SCA.

3.5.4 Actions	Timing	Record of progress
1. Make info on environmental sensitivity, zonations and approved activity widely available and accessible	2009	
2. Publicise roles and authority of Honorary Wardens	2009	
3. Establish Information Boards on	2009 & 2010	

above two points		
4. Use the Consultative Forum to review new recreational activities and make recommendations to the Strategic Forum for inclusion as appropriate into the zonation plan	2009 and ongoing	

Notes:.....
.....
.....
.....

3.6 Tourism management and development

3.6.1 Principle: Use of the SCA is planned and implemented to promote appropriate tourism development and growth, but this is done within a zonation and management framework that ensures that the character, beauty, diversity and integrity of the fragile SCA is maintained, that visitors have a high quality experience that includes a sense of place, peace and tranquility, and that contributes effectively to socio-economic development, employment creation and empowerment as envisaged in the Tourism Transformation Charter.

3.6.2 Vision: To provide for present and slightly expanding high quality eco-friendly tourism opportunities through good planning, zonation, management and collaboration between the conservation and tourism sectors, to help raise awareness and educate visitors about the SCA and the Namib-Skeleton Coast National Park, desert and coastal environments, and to promote investment opportunities for all Namibians, particularly those previously excluded from the tourism sector as envisaged in the MET's Concessions policy and the Tourism Transformation Charter.

3.6.3 Strategies:

- a) Develop a detailed "Tourism Plan" for the SCA within the context of the Namib-Skeleton Coast National Park that includes a

feasibility assessment, sets Carrying Capacities, management actions and tourism impact monitoring within the context of the Park's zonation plan. The plan should address the following components:

- Take full cognizance of the environmental sensitivities and biodiversity values of the area and its zonation, and should strive to enhance, but never diminish these.
- Take full cognizance of the recreational requirements of the visitors to the area.
- Take full cognizance of the rights and livelihoods of local communities and residents adjacent to the park.
- Promote mid and high-end tourism, but with an emphasis on promoting sustainable tourism practices.
- Make special provision for opportunities for community participation in the tourism development of the SCA. In this regard, the MET's Concessions policy will apply.
- Place special consideration on promoting broad-based Black Economic Empowerment and involvement in the tourism development of the SCA. FENATA's Transformation Charter should be applied.
- Establish a small number of Concession Areas for Educational, high quality, low volume, low impact 4x4 desert safaris.
 - Focus should be on high-end tourism in the more remote areas (e.g. northward of the Hoanib River), and non-exclusive mid-market tourism in the Terrace Bay and Torra Bay areas.
 - Explore potential of one small high end-of-market lodge in the Cunene Mouth area, and promote the idea of this being a cross-border tourism product.
 - Develop nature walks in areas of beauty and interest (e.g. Uniab Delta).
 - Establish, maintain and stock good quality interpretation materials (maps, posters, brochures, exhibits) at the main entry points to the SCA (Ugab and Springbokwasser) and promote their inspection and / or distribution (as appropriate) to visitors.
 - Develop these entry points as centres of information, aesthetic appeal and friendly service so that visitors appreciate the fact that they are entering a highly valuable and carefully protected part of the NSCNP. Park staff must realize that the image created by the entry points sets the

tone for how visitors will either respect or disrespect the park. Therefore, their uniforms, appearances, offices, gardens and other infrastructure, must be maintained with pride.

- b) Initiate investment proposals for priority tourism ventures (see Annex A).
- c) Prepare and disseminate maps and information on the ecology, biodiversity, sensitivity, zonation and regulations of the SCA, with special attention to priority conservation areas.
- d) Develop agreed procedures and conditions for the various concessions.
- e) Ensure that the zonation plan is implemented correctly, and that it is reviewed, refined and updated from time to time.
- f) Aerial zonation, heights and no-flying zones to be determined and form part of the zonation and tourism plan.
- g) Ensure that tour guides are well trained, motivated and well tuned to visitor's needs and local conditions.
- h) Ensure that the role and authority of Honorary Wardens are well publicized.
- i) Consider the possibility of establishing a permanent coastal village at Toscanini - where Namibians can acquire a coastal property (on medium term lease) in a premier National Park. Initial ideas in this regard are:
 - 50 -100 erven leased to Namibians by the park for a limited period (e.g. 35 years), after which the park either renews the lease or leases to someone else (eligibility criteria to be determined)
 - lessee's to develop coastal cottages (permanent structures) that comply with strict architectural specifications (to be determined) and construction standards so that the village both blends into the Skeleton Coast environment and adds to it
 - Minimal services to be provided so that the village retains a rustic, rural and remote feel (e.g. no electricity, no shops), but proper sewerage system needed. Water to be piped from Ugab or desalinated
 - Restrictions as to how many person-nights may be permitted per cottage per year so as to limit occupation density and environmental impacts

- Activities by residents limited to own consumption angling (no fish to be removed from the park), walking, nature appreciation, sea-kayaking.
- No pets allowed, no gardens may be established, no offroad driving, etc.....
- Full EIA to be conducted as part of feasibility study.

3.6.4 Actions	Timing	Record of progress
1. Develop a detailed Tourism Plan	mid 2009	
2. Develop agreed procedures and conditions for the various concessions (some already in existence)	mid 2009 and ongoing	
3. Hold a Tourism Investor Conference, and call for proposals for prioritized fast-tracked sites	Early 2010	
4. Design phased implementation mechanisms for the remaining aspects of the Tourism Plan	2010 and implement in phases	
5. Set standards for tour operators and guides	From time to time	
6. Prepare and disseminate maps and information, and establish good quality signboards in strategic locations in the SCA - but avoid too many signboards as this spoils sense of place.	2010	
7. Establish monitoring system to track and document tourism numbers, activities, impacts, etc.	As necessary	
8. Explore the feasibility of developing a permanent coastal village at Toscanini (including conducting an EIA).	2010	

Notes:.....

.....
.....
.....
.....
.....

3.7 Prospecting and mining

3.7.1 Principle: No prospecting and mining activities will be allowed in the SCA, and all old mines must be decommissioned and rehabilitated to as near a natural state as possible.

3.7.2 Vision: The SCA is free of all prospecting and mining

3.7.3 Strategies

- a) Negotiate an agreement between MME, MFMR and MET that prevents new prospecting and /or mining licenses to be awarded in the SCA and that already approved licenses are terminated where possible (as soon as possible), or terminated as soon as the operation in question closes of its own accord.
- b) Applying safeguards is a key strategy for avoiding and/or reducing impacts to acceptable levels. All prospecting and mining activities already permitted **MUST** be preceded by an Environmental Impact Assessment in accordance with the word and spirit of Namibia's EA Policy (1995) and legislation (Environmental Management Act No. 7 of 2007, and Minerals (Prospecting and Mining) Act, 2003.). The logical consequence of the EIA is the compilation of an Environmental Management Plan (EMP). The EMP must define both outcomes and the methodology (in some detail) as to how the outcomes will be achieved.
- c) Approved prospecting and/or mining company must provide the Namib-Skeleton Coast National Park staff with an environmental report every 6 months, showing its progress towards meeting agreed upon safeguard targets. Once

- prospecting and/or mining have ceased, the impacts must be rehabilitated in accordance with the stipulations of the EMP.
- d) Communication with prospecting and mining companies is conducted on a regular basis to ensure that mutual-expectations are clear and re-enforced. Mining representatives will serve on the Consultative Forums, but it is still necessary for the Park staff to visit and talk to operators on the ground. Regular visits will not only facilitate dialogue, but they will also demonstrate MET's "hands on" approach towards monitoring. Visits by MET staff must be fully facilitated by mining companies in a spirit of open-cards and transparent partnership.
 - e) Monitor implementation of EMPs, paying special attention to the achievement of safeguard targets. A detailed inspection report must be completed after each visit to the prospect or mine by Park staff, with copies sent to MET Head Office, the Strategic Forum, the mine/company inspected and the Mining Commissioner within MME. The report must include an "action" column, where it is clear what action needs to be undertaken by whom and by when, to remedy an environmental concern. As far as possible, the inspecting office should take photographs of key issues of concern. These should be digital since the camera will record date and time - both essential pieces of information. If possible, the inspecting officer must obtain the counter-signature of the prospector/miner who was present during the inspection.
 - f) In the case of non-compliance, Park staff must immediately report the matter to the Strategic Forum in order to enable "in house" remediation. If this fails, the matter must be reported to MET HQ for higher-level attention. The Park should request external review/inspection should they not have the technical Capacity to assess the situation themselves. If possible (i.e. within the provisions of the law), the prospector/miner must be responsible for carrying all the costs of external consultants. Refer to the Environmental Management Act (No. 7 of 2007) for specific actions to be taken.
 - g) Establish a "daily park user fee" mechanism (as per filming industry) for prospecting and mining. The fees shall accrue in an account available for park management and development activities in compliance with the MDP. The administration and management of the account shall be by the CF and follow recognized accounting practices and standards.

3.7.4 Actions	Timing	Record of progress
1. Negotiate an agreement with MME to withdraw the SCA from all future prospecting and mining, and for MME to facilitate the expiry of existing operations	Early 2009	
2. Compile an inventory of all prospecting and mineral licenses in the park, noting type of license, its boundaries, conditions of approval, ownership, status and contact persons.	Early 2009	
3. Establish a library of all the relevant EIA reports, EMPs and Records of Decision for each license.	2009 and ongoing	
4. Develop a "prospecting and mining monitoring sheet" that enables easy field monitoring.	Mid 2009	
5. Compile a "prospecting and mining inspection schedule" - say, twice annual visits. The schedule should be provided to each mineral license holder so that they know when to expect an inspection (this does not preclude unscheduled spot-checks).	2009	
6. Obtain agreement from MME to allow the establishment of park specific prospecting and mining user fees.	2009	
7. Monitor as per schedule.	Commence 2009 - thereafter ongoing	

Notes:.....

.....
.....
.....

3.8 Aquaculture

3.8.1 Principle

No aquaculture will be permitted in the SCA.

3.8.2 Vision

N/A

3.8.3 Strategies

N/A

3.9 Other industries

3.9.1 Principle

The SCA should not accommodate any industry other than the types of recreation and tourism described earlier.

3.9.2 Vision

as above.

3.9.3 Strategies

N/A

3.10 Law enforcement

3.10.1 Principle: Permits will be required for access to any parts of the SCA. Restricted or concession areas (designated camp-sites, special tourism concession areas and sections of the park which are closed to general public access.) require special permits. Illegal entry, activities and use of wildlife, plants and other natural resources within and adjacent to the park is controlled and kept to a minimum.

3.10.2 Vision: A zero tolerance approach will be followed against all illegal activities within and adjacent to the SCA. A

partnership of collaboration will be established with all relevant stakeholders, under MET/MFMR leadership, to secure adherence to law and order in and around the SCA.

3.10.3 Strategies:

- a) Develop a practical, harmonized approach to the implementation of law enforcement within the context of this MDP and Park regulations, by establishing strong partnerships between MET and MFMR, with the Namibian Police and by establishing a team of Honorary Wardens.
- b) Plan, develop and implement, in partnership with MFMR, adjacent conservancies and the Honorary Wardens, an efficient and effective tourism management and access control system.
- c) Ensure security and anti-poaching (including plant, reptile and other natural resource collection/theft) patrols and surveillance are conducted at regular but unpredictable intervals, particularly in high-risk areas (e.g. along main access routes to the east of the park, in and around the westward flowing rivers and in and around villages between the park and the escarpment) and that they are highly visible.
- d) Develop an attractive reward system and let it (and the zero tolerance approach) be widely known in the area.
- e) Establish a "Hot-Line" for people to report transgressors, and an efficient response mechanism.
- f) Ensure that the Honorary Warden system, their roles and authority, are well publicized and known throughout the area, to both residents and visitors.
- g) Ensure that MET, MFMR and Honorary Wardens are well trained to preserve and collect evidence so that arrests result in convictions.

3.10.4 Actions	Timing	Record of progress
1. Plan (with relevant partners, including Hon. Wardens) a practical plan for implementing law enforcement in the context of this MDP & relevant legislation	2010	
2. Develop (with partners) an effective tourism management and access control system,	2009	

with particular attention to the holiday seasons and illegal entry via the westward flowing rivers		
3. Disseminate information on zero tolerance approach & reward scheme, as well as information on roles and authority of Hon. Wardens	2009 and ongoing	
4. Carry out regular patrols (ground and air) to ensure high presence level	Ongoing	
5. Train staff and Hon Wardens in collection of evidence	2010 and ongoing	
6. Establish a Hot-Line for reporting of transgressors	2009	

Notes:.....
.....
.....
.....

3.11 Water management

3.11.1 Principle: A minimalist, ecologically appropriate and tourism friendly water plan is implemented, taking into account neighbouring land use and water provision.

3.11.2 Vision: The provision of water for wildlife will be undertaken strategically in the interests of maintaining biological diversity in an unfenced ecosystem. Emphasis will be placed on securing open systems and corridors in west-east and north-south directions, to facilitate natural ecological processes and reinstating historic movement patterns. Water use for other purposes will be judicious, minimalist and based on environmental assessment principles.

3.11.3 Strategies:

- a) Water point development and management will be on a strategic basis - the default setting is a minimalist provision of water.
- b) In a critical situation, e.g. wildlife dying in times of extreme drought, then temporary water provision may be availed if considered absolutely necessary.
- c) The park-neighbour policy and strategy will be energetically pursued to explore partnerships to the east, and the opening up of west-east corridors with land managers that share compatible values and land-uses with those of the park.
- d) All natural water points will be carefully managed to avoid disturbance and degradation, and an appropriate monitoring system will be established.
- e) Abstraction of groundwater from the SCA, and in adjacent areas, will be carefully monitored, both the volumes abstracted and impacts on the environment, and adaptively managed.
- f) Use of water for tourism, mining and other purposes must be judicious, minimalist, demand managed and monitored. Sustainable sources of water must be used. No unsustainable extraction will take place or any extraction that may have negative biodiversity impacts.

3.11.4 Actions	Timing	Record of progress
1. Create a map and inventory of all natural water points as well as boreholes & infrastructure, together with their attributes, such as yield & depth	2009	
2. Ensure that all natural water points remain undisturbed, with low level monitoring	Ongoing	
3. All bulk water abstraction projects must be preceded by an EIA	Ongoing	
4. Good water demand management practices and monitoring should	Ongoing	

be implemented for water use in the SCA and throughout the Namib-Skeleton Coast NP		
--	--	--

Notes:.....
.....
.....
.....

3.12 Fencing

3.12.1 Principle: Open systems are maintained for the largest possible landscape integrity, both within and beyond the SCA and the Namib-Skeleton Coast National Park.

3.12.2 Vision: Maintain a "fence free' SCA, by only fencing essential sites (Remove all fences except those that have strategic value - e.g. fences around refuse dumps, security fences around decca stations, etc).

3.12.3 Strategies:

- a) Maintain secure fencing around refuse dumps and other secure areas to avoid breach by humans or scavengers.
- b) Maintain the fence between Ugabmond park entry gate and the beach, to avoid illegal entry through this alignment

3.12.4 Actions	Timing	Record of progress
1. Patrol & maintain fences as appropriate	2009 and ongoing	

Notes:.....
.....
.....

3.13 Roads

3.13.1 Principle: A minimal, practical, ecologically and aesthetically appropriate road network will be maintained to help achieve the objectives of the SCA.

3.13.2 Vision: Rationalise and maintain a road network to serve the recreational, tourism, business, management and monitoring needs of the SCA.

Close and rehabilitate obsolete roads. No new roads developed without strong rationale and EIA, and no off-road driving except in areas clearly designated and zoned for this purpose.

3.13.3 Strategies:

- a) A carefully selected network of roads will be maintained for the effective management of the park and its approved recreational, tourism and business activities.
- b) Existing roads, tracks and borrow pits not forming part of the network will be closed and rehabilitated.
- c) Any new roads and associated infrastructures (e.g. borrow pits) will be subject to an EIA.
- d) No billboards (that advertise products or services) will be allowed anywhere in the Namib-Skeleton Coast National Park.

3.13.4 Actions	Timing	Record of progress
1. Develop an accurate GIS-based map of current roads & tracks, including making use of aerial photographs	2009 and ongoing	
2. Develop a road network plan showing roads and related infrastructure to be retained or decommissioned and rehabilitated	2010	
3. Close off unneeded roads	From 2010	

4. Rehabilitate closed roads, tracks and old borrow pits	2010-2013	
5. Any new roads, borrow pits, etc to be subject to EIA	Ongoing	

Notes:.....
.....
.....
.....

3.14 Monitoring and Information Management

3.14.1 Principle: Carefully selected indicators and groups of indicators are monitored to allow for timely and judicious assessments and adaptive management.

3.14.2 Vision: A minimal but regular monitoring of climate, key habitats and biodiversity, land use impacts, water quality, park management performance and other key indicators will be conducted and promoted to help understand ecological changes, stresses and management effectiveness.

Participatory monitoring will be encouraged and, where appropriate, monitoring shall be outsourced to special interest groups and specialist stakeholders.

Information and data resulting from monitoring activities will be recorded, stored and curated as time-series and geo-referenced data sets within a Namib-Skeleton Coast National Park Information System.

The information produced from the monitoring systems will be in the public domain and will feed into adaptive management decision-making.

3.14.3 Strategies:

- a) Monitoring will focus on key indicator processes, impacts, habitats and species, with an emphasis on ensuring regular data collection at appropriate intervals, cost efficiency and sustainability.

- b) Monitoring will also assess the effectiveness of management of the SCA, applying best practice tools such as "Namibia's Management Effectiveness Tracking Tool" (NAMETT).
- c) Monitoring systems shall apply approved tools already being widely used (e.g. Event Book system), and shall also continue with systems already established and running within the SCA, (e.g. wetland bird counts, coastal bird counts, Damara Tern monitoring).
- d) Monitoring systems will be balanced to ensure that the entire range of critical information needs is covered.
- e) A Namib-Skeleton Coast Park Information System will be established to store, manage and help analyse spatial and temporal data sets as well as other pertinent information.
- f) Information will be made widely and freely available, in accessible format, to all stakeholders, including via the media.

3.14.4 Actions	Timing	Record of progress
1. Develop an appropriate monitoring framework to include the monitoring requirements of the SCA, and incorporate ongoing monitoring initiatives (e.g. wetland counts, coastal bird counts, Damara Tern monitoring), and where appropriate, adapt other national systems such as the "Event-Book", with appropriate training for staff and other implementing partners	2009 onwards	
2. Develop an accessible and user-friendly Namib-Skeleton Coast National Park Information System and meta database (for spatial & temporal data and other info), that can be easily expanded and up-scaled to serve larger co-managed landscape complexes, to: <ul style="list-style-type: none"> • store, manage, curate data/info • retrieve, interrogate, analyse 	2010 and ongoing	

<p>and aggregate data/info</p> <ul style="list-style-type: none"> • generate reports based on carefully designed templates for key information needs 		
<p>3. Establish fixed photo-point and aerial photography monitoring of key aspects (e.g. ephemeral river for impact of water abstraction, tracks, mining footprint, etc), and repeat photographs at regular intervals (every 6 or 12 months)</p>	<p>2009 onwards</p>	
<p>4. Make time-series data and analysed information available for adaptive management, and for distribution to interested stakeholders, decision-makers and the general public</p>	<p>Ongoing</p>	
<p>5. Use above data and information to prepare an annual State of Namib-Skeleton Coast National Park Report. Establish computer-based analyses and map/figure protocols to automate this process as far as possible, with minimal explanatory text.</p>	<p>2010 and ongoing</p>	

Notes:

.....

.....

.....

.....

.....

3.15 Research

3.15.1 Principle: Management and development of the SCA of the Namib-Skeleton Coast National Park will be information-based, drawing on good quality research and monitoring. To ensure that good data are available, the Park will implement a research-friendly and supportive philosophy and encourage the non-invasive use of the park as an open-air laboratory. The Gobabeb Training and Research Centre (GTRC) shall be the research headquarters for the terrestrial components of the Park, while the Fisheries Research and Information Centre (FRIC) shall serve this function for the coastal and marine ecosystems.

3.15.2 Vision: Park management will be based on good scientific information. Gobabeb will be supported to become the research headquarters for the Park, and to become a research hub for MET and partner research on desert systems of Namibia. A supportive environment will be created for visiting scientists, including the facilitation of research permits. Two levels of research are recognized:

- (a) Applied research in support of priority park information and management needs, and
- (b) Basic or interest research identified by outside researchers.

Preferential support will be given to the former, while the latter will be supported when feasible. All forms of research are encouraged, including biological, hydrological, geological, paleontological, archaeological, historical, climatological, social, economic, etc.

3.15.3 Strategies:

- a) A prioritised and open-ended list of key research topics will be developed for the Park and disseminated to appropriate research institutions.
- b) An appropriate support mechanism will be developed for visiting scientists, making use of Gobabeb where appropriate, with emphasis on those addressing priority research topics relevant to the park.
- c) Appropriate mechanisms will be developed to ensure that optimum feedback and other values from national and visiting researchers are obtained.
- d) Links will be established with research activities carried out in other parks, particularly in arid regions, as well as with other relevant research organisations and field stations in Namibia, and comparative studies between the different desert ecosystems will

be encouraged, including transboundary with other components of the Namib Ecosystems, in adjacent countries.

- e) Ensure that Gobabeb and FRIC are integrated into the Park Information System and meta database and that results from research are added to this System.

3.15.4 Actions	Timing	Record of progress
1. Develop an open-ended list of priority research topics based on information needs for the SCA management, facilitated by Gobabeb and the FRIC	Start in 2009 and ongoing	
2. Design a reciprocal "support package" for researchers addressing priority research topics and ensuring maximum returns to the SCA, the Park and Namibia, facilitated by Gobabeb	2009 and ongoing	
3. Participate actively in comparative research programmes across the arid zones and between the various desert ecosystems	2010 and ongoing	
4. Ensure research outputs and findings are integrated with monitoring data in the Park Information System.	From 2008	

Notes:.....

3.16 Education and Awareness

3.16.1 Principle: The Namib and adjacent coastal ecosystems offer unique open-air classroom and laboratory opportunities for education and awareness creation on the subjects of geology, geomorphology, climatology, hydrology, zoology, botany, arid-zone ecology, wetland biology, adaptive evolution, paleontology, archaeology, conservation, sustainable development and many other fields. The SCA contains dune fields, gravel plains, ephemeral rivers, sandy and rocky shores, important wetlands, a host of arid-adapted plant and animal life plus human-ecosystem interactions. The area thus has huge educational and awareness-raising potential, which will be exploited in the interests of ensuring that visitors and staff are well informed and enriched by associating with the SCA and the Park.

3.16.2 Vision: To develop good quality, accessible and stimulating information and activities on the key biophysical and socio-archaeological aspects of the different habitats within the Namib and coastal ecosystems that are represented within the SCA, and to share this information with guests, visitors, youth groups, specialist groups, decision-makers, officials and the general public in interesting and exciting ways so as to promote an understanding of and commitment to the conservation and sustainable development of the Namib Desert and coastal areas of Namibia. Participatory and collaborative mechanisms will be used, harnessing the strengths of different government agencies, NGOs and special interest groups, the business community and the Gobabeb Training and Research Centre.

3.16.3 Strategy

- a) Establish an Information Centre in the SCA, preferably at the two entry points (Ugabmond and Springbokwasser).
- b) Prepare good quality information in different forms (posters, brochures, reports, maps, newsletters, displays, booklets, DVDs, website, etc.), that is made available to visitors, staff and the general public.
- c) Ensure that research carried out in the SCA and other parts of the Park is translated into accessible information for the layperson.

- d) Ensure that tour guides are well trained at national and local levels, and that they create exceptional field experiences for tourists by sharing their knowledge in interesting and stimulating ways.

3.16.4 Actions	Timing	Record of progress
1. Establish an Information Centre at each of the entry points	2010-2011	
2. Compile good quality information on different aspects of the geology, ecology, archaeology, etc. of the SCA and from this, prepare materials for the dissemination of key information, e.g. Damara Terns, Important Bird Areas, wetlands, desert wildlife, lichens, etc.	Ongoing	
3. Produce small information boards for strategic placement at key sites	2009 and ongoing	
4. Produce maps and special information sheets on aspects such as off-road driving, duties and responsibilities of Honorary Wardens, info on the Environmental Hot-Line, etc.	2008 - 2010	
5. Set standards for tour guides - both procedural (e.g. track etiquette) and technical (environmental knowledge, etc), as well as social (tourism interaction skills) - at both the SCA, NSCNP and neighbouring conservancy levels.	2009-2011	

3.17 Development Guidelines

3.17.1 Principle: All management and development decisions and activities within the SCA and the Namib-Skeleton Coast National Park will be based on the principle of Sustainability and on the Precautionary and Polluter Pays Principles.

3.17.2 Vision: All developments and activities within the SCA and the Park will be guided by the sensitivity of the environment and by

the unique and unusual opportunities that the environment offers for innovative developments and activities.

In addition, such developments and activities will be conducted in an environmentally sensitive manner according to best available practices as required by national law, international standards and high environmental principles and ethics.

3.17.3 Strategies:

- a) Foster an environment in which all players (MET & MFMR staff, other ministries and parastatals, residents and local communities, business operators and visitors) are encouraged to be innovative and fully committed to the highest ideals of sustainable development, ecosystem and landscape integrity, and to create the lightest possible "footprint".
- b) Apply best environmental practices, including existing and evolving EIA and strategic assessment approaches to all developments in the SCA that are likely to have a significant impact.
- e) Apply Namibia's Eco-Awards guidelines and criteria to the development and management of all tourism initiatives and developments - both infrastructure and activities.
- f) Develop a list of priority issues (e.g. prospecting and mining, road development, tourism activities, waste disposal, water use) for which specific guidelines (policies) should be systematically developed, and ensure that they are fully understood and implemented by relevant staff and stakeholders.
- g) Do not allow the establishment of billboards anywhere in the park. Appropriate and sensitive road signage and information and awareness-raising boards on key environmental and management issues are permitted.

3.17.4 Actions	Timing	Record of progress
1. Locate, be familiar with and use best practice policies and guidelines, including strategic assessment, EIA and Eco-Awards materials	2009 and ongoing	
2. Develop specific guidelines and policies for priority issues	2010 and ongoing	
3. Ensure staff are familiar with and	2010 and	

implement the guidelines to appropriate standards	ongoing	
---	---------	--

Notes:.....

.....

.....

.....

3.18 Rehabilitation

3.18.1 Principle: Natural landscapes and biodiversity are, as far as possible and practical, reestablished to their pristine condition or in line with agreed future land use.

3.18.2 Vision: To remove all unnecessary evidence of human activity and/or occupation from the Park, except agreed infrastructure that has practical or tourism value, and to rehabilitate landscapes and biodiversity, using best available practices, with emphasis on those areas of greatest ecological and aesthetic importance.

3.18.3 Strategies:

- a) Commission a rehabilitation plan based on an inventory and criteria (log of areas, prioritization, costs and timelines) for the SCA.
- b) Identify responsibilities for rehabilitation - both technical and financial responsibilities.
- c) MET and other relevant parties, including designated organizations entrusted or employed to do this work, to systematically implement rehabilitation in areas and on aspects of respective responsibilities, to agreed standards and levels, starting with the affordable priorities.

3.18.4 Actions	Timing	Record of progress
1. Commission a rehabilitation plan	Start in 2010	
2. Identify responsibilities for rehabilitation	Completed during 2010	

3. Implement rehabilitation in areas and on aspects of respective responsibilities, starting with the affordable priorities and using job-creating opportunities where possible.	2011 and ongoing	
--	------------------	--

Notes:.....

.....

.....

.....

3.19 Financing

3.19.1 Principle: A significant component of the financial resources required to effectively implement this MDP are raised from within the SCA through levies, concession fees, fines, donations and other sources. These funds are held, administered and deployed under the local control of the Consultative Forum, using transparent and accepted accounting practices.

3.19.2 Vision: To raise, administer and apply funds for the implementation of this MDP. This would include:

- exploring and implementing appropriate mechanisms for resource collection and mobilization,
- establishing and implementing financial administration and management systems under the jurisdiction of the Consultative Forum and applying transparent and accepted accounting practices,
- establishing procedures for the Consultative Forum to review, discuss and approve fund deployment for legitimate activities towards the implementation of the MDP,
- reporting on funds received and expended, and on the outputs, outcomes and impacts of the actions funded.

3.19.3 Strategies:

- a) Initiate a discussion between MET, MFMR, Ministry of Finance and representatives of the Consultative Forum on mechanisms to raise, hold, administer, manage and apply funds, within the control of the Consultative Forum, for the implementation of the MDP.
- b) Based on the outcome of the above, establish the necessary financial management procedures, accounts and processes required to ensure good transparent financial accounting and reporting.

3.19.4 Actions	Timing	Record of progress
<ul style="list-style-type: none"> • Initiate a discussion with MoF on procedures for raising, holding, administering and applying funds locally for this MDP. 	Start in mid 2009	
<ul style="list-style-type: none"> • Plan next steps based on the outcomes of the above discussions 	Following on from above	

Part 4: Record keeping

3.1 Annual work plans

Each year's work plan must be filed under this section.

The annual work plan consists of a simple matrix that states:

- What should be done
- When should it be done, and
- Who should do it

These activities are derived from the MDP and follow the sequence of actionable topics under Part 3. They are best divided into five categories

- *Routine management issues,*
- *Development issues,*
- *Monitoring requirements,*
- *Research priorities and*
- *Administration of work plan*

SCA of the Namib-Skeleton Coast National Park													
Annual Work Plan for 20 __													
Activities	J	F	M	A	M	J	J	A	S	O	N	D	Responsible
Routine management													
1.													
2.													

3.																				
4.																				
Etc.																				
Development issues																				
1.																				
2.																				
3.																				
4.																				
Etc.																				
Monitoring aspects																				
1.																				
2.																				
3.																				
Etc.																				
Research priorities																				
1.																				
Etc.																				
Administration of work plan																				
1. Park CF meeting - progress report		*								*							*			Committee
2. Adopt w/plan & budget for next year																	*			Committee
3. Annual technical report from past year		*																		Committee
4. Annual monitoring report (feed into w/p)		*								*							*			Committee
5. Etc.																				

3.2 Annual budget

Based on a "zero budget" approach, and aimed at making maximum sustained impact in most cost effective and efficient ways. The budget should closely follow the contents of the Annual Work plan. It essentially aims to allocate financial resources to ensure that the work plan is effectively implemented. A standard budget format should be developed that allows for smooth and simple integration with the budgets for other Parks in the region, and then at the national level.

An example of an annual budget for the SCA is shown below:

SCA of the Namib-Skeleton Coast National Park				
Annual budget for 20 __ __				
Budget line items	Unit cost (N\$)	No. Units	Total (N\$)	Notes
1. Staff remunerations				
1.1 Park Warden				
1.2 Chief ranger	Xxx/month	12 + 1		1
1.3 Rangers x 3	Yyy/month	12 + 1		2
1.4 Labourer x 3	Zzz/month	36 + 3		3
1.5 Casual labour	Aaa hours	Bb hours		4
1.6 Social Security				5
1.7 Medical aid				6

1.8 Rations				7
1.9 etc				8
1.10 Consultancy services	Xxx/days	Yy days/yr		9
2. Transport				
2.1 Vehicle fuel	Xxkm/mnth@yy/km		12	10
2.2 Vehicle maintenance				11
2.3 Licence, etc,				12
3. Equipment				
3.1 Chainsaw	xxx		1	13
3.2 etc				14
4. Building materials				
4.1 Cement				15
4.2 etc				16
5. Co-management support				
6. Monitoring				
7. Research				
6. Information sharing and dissemination				
7. Rehabilitation				
8. Administration				

Comprehensive notes should accompany the budget so that a person not familiar with the SCA would understand the logic of how resource allocation has been determined and calculated

No.	Budget Notes
1	
2	
3	
4	
Etc	

A copy of each annual budget should be filed under this section.

Agendas and Minutes of Strategic SCA Forum meetings

The agenda and minutes of each Strategic Forum meeting, plus the Terms of Reference for this Body, must be filed under this section.

Agendas and Minutes of SCA Consultative Forum meetings

The agenda and minutes of each SCA Consultative Forum meeting, plus the Terms of Reference for this Forum, must be filed under this section.

Annual reports

Each annual report for the SCA should be filed under this section.

Amendments/changes to the SCA MDP

Any changes to Parts 1-4 of the MDP must be recommended at a formal SCA Consultative Forum meeting and approved by the SCA Steering Body at a formal meeting, and such changes must be formally reflected in the minutes. Copies of the relevant sections of the minutes must be filed under this section of the Plan.

All changes must be entered into the "Record of Management Plan Updates" (see table below) and the amended section(s) circulated to the people/offices listed below, with a completed Record of Management Plan Updates form.

Update number	Date	Page/s removed	Page/s inserted
1			
2			
3			
4			
5			
6			

Original copies of the MDP

The following will be provided with original copies of the MDP and its updates:

- NSCNP CEO - Swakopmund
- MFMR park representative - Swakopmund
- Chief Conservation Scientist - Gobabeb
- SCA Warden and staff, Mowe Bay, Ugabmond and Springbokwasser
- Wardens of Namib-Naukluft Management Area, Central Namib Management Area and Sperrgebiet Management Area
- Parks Deputy Director, Windhoek
- Parks & Wildlife Director, Windhoek
- MET Library, Windhoek
- Office of the MET PS, Windhoek

- Offices of the PSs of MME, MFMR, MLRGHRD
- Office of the MET Deputy Minister, Windhoek
- Office of the MET Minister, Windhoek
- Office of the Governor - Kunene and Councilors
- Relevant NGOs
- Any other stakeholder that requests a copy

Part 5: Inventories and background information

This is a very dynamic part of the MDP, and should be added to and updated as information becomes available. The following topics, which may be added to, are relevant:

- 5.1 Geographic location, coverage and topography (maps)
- 5.2 Climate
- 5.3 Geology & geomorphology
- 5.4 Hydrology
- 5.5 Ephemeral river systems and wetlands
- 5.6 Cunene river and mouth
- 5.7 Ground water
- 5.8 Broad habitats
- 5.9 Flora
- 5.10 Mammals
- 5.11 Birds
- 5.12 Reptiles
- 5.13 Amphibians
- 5.14 Fishes
- 5.15 Coastal and marine fauna
- 5.16 Terrestrial invertebrates
- 5.17 Endemic species and patterns of distribution
- 5.18 Red Data species
- 5.19 Alien species
- 5.20 Paleontology
- 5.21 Archaeology
- 5.22 History
- 5.23 Land use, past and present
- 5.24 Infrastructure
- 5.25 Administration
- 5.26 Legal issues

Information for this section should be obtained opportunistically, by Park staff, informed visitors, by attracting visiting scientists, and by working with universities and other interested organisations and individuals.

New information may have management implications. Such information, where relevant, should be tabled at SCA Consultative Forum meetings. New information may lead to recommendations for changes in aspects of monitoring and management.

Part 6: Studies and reports

This is also a dynamic part of the MDP. As the results of studies, reports and publications on the SCA and relevant adjacent areas and topics are completed and become available, their full citation should be listed here, with author, date, title and reference. Copies of the reports and publications should be kept at:

- a) The MET library in Windhoek,
- b) The Park HQ of the Namib-Skeleton Coast National Park (Mowe Bay), and
- c) The NSCNP head office (Swakopmund).

List of Reports and Publications from and relevant to, the SCA of the Namib-Skeleton Coast National Park				
No.	Author(s)	Date	Title	Reference
1				
2				
3				
4				
5				
6				
7				
8				
9				
10				
11				
12				

APPENDIX A – PROPOSED development and investment opportunities for the Skeleton Coast Area of the Namib-Skeleton Coast National Park

Tourism:

- One investor may obtain an exclusive concession to establish a small coastal lodge in the Cunene mouth area. Transparent tender process and full EIA and EMP will be required prior to decision. Lodge must comply with highest rating of Namibia Eco-Award criteria.
- One investor may obtain an exclusive concession to continue operating the existing Skeleton Coast Concession, based in the Khumib River. Transparent tender process and update of existing EIA and EMP will be required prior to decision. Lodge must comply with highest rating of Namibia Eco-Award criteria.
- One investor may obtain an exclusive concession to operate the lower Ugab guided walking trail. No EIA or EMP required, but performance indicators will be specified.
- One investor may obtain an exclusive concession to operate the lower Hoarusib guided walking trail. No EIA or EMP required, but performance indicators will be specified.
- One investor may obtain an exclusive concession to operate the Terrace Bay to Mowe Bay coastal wilderness walking trail. No EIA or EMP required, but performance indicators will be specified.
- One investor may obtain an exclusive concession to take 4x4 day tours for guests staying at Terrace Bay, to areas of interest and scenic beauty. These include the dunes, Uniab delta, Hunkab spring, etc. Transparent tender process and mini-EIA and mini EMP will be required prior to decision.
- Park will consider the possibility of establishing a permanent coastal village at Toscanini - where Namibians can acquire a coastal property (on medium term lease) in a premier National Park. Initial ideas in this regard are:
 - 50 -100 erven leased to Namibians by the park for a limited period (e.g. 35 years), after which the park either renews the

lease or leases to someone else (eligibility criteria to be determined)

- Lessee's to develop coastal cottages (permanent structures) that comply with strict architectural specifications (to be determined) and construction standards so that the village both blends into the Skeleton Coast environment and adds to it.
- Buildings must achieve the highest rating of the Namibia Eco-Award Criteria.
- Minimal services to be provided so that the village retains a rustic, rural and remote feel (e.g. no electricity, no shops), but proper sewerage system needed. Water to be piped from Ugab or desalinated
- Restrictions as to how many person-nights may be permitted per cottage per year so as to limit occupation density and environmental impacts
- Activities by residents limited to own consumption angling (no fish to be removed from the park), walking, nature appreciation, sea-kayaking.
- No pets allowed, no gardens may be established, no off-road driving, etc.....
- Full EIA to be conducted as part of feasibility study.
- Homeowners Association must be established, and they must take responsibility for members behaviour. HOA must also serve on the SCAs CF and assist park authorities as much as possible.

Regulations

Preamble

These regulations specify what is permitted or not permitted in the SCA of the NSCNP. They are a compliment to the Management and Development Plan (MDP) and an issue not included in the regulations, but covered in the MDP, is in such cases regulated by the text in the MDP.

A. Public Access

1. Any person entering the SCA of the NSCNP does so wholly at his/her own risk. Thus, the Government of the Republic of Namibia shall not be liable for any damage suffered on account of physical injury, whether fatal or not, incurred in any way whatsoever in the park.
2. Unless authorized in writing by the Minister, no bikes or quad bikes may access the SCA, except on a proclaimed road and then subject to the relevant Traffic Ordinance and regulations,
3. Unless permitted through a concession agreement or permit, motor vehicles may only access the following areas:
 - a. Any proclaimed road, subject to the relevant Traffic Ordinance and regulations,
 - b. The beach and track network in the Terrace Bay and Torra Bay angling areas but excluding all demarcated and signposted exclusion areas (e.g. Damara tern breeding sites, lichen fields, and dune hummocks.
3. Walking and jogging is permitted anywhere in the Terrace Bay and Torra Bay angling areas, and in the respective tourism concession areas, and in the Toscanini village area, unless specifically not

permitted in demarcated and signposted exclusion areas (e.g. Damara tern breeding sites, lichen fields).

4. Aircraft, microlights and gliders may overfly the park providing they are at least 3000 feet above important wetlands (Cunene mouth) and above 1000 feet anywhere else, and that all Civil Aviation laws and regulations are conformed with. Aircraft may only land on registered and/or approved airfields, unless a forced landing is required in an emergency, in which case the required Civil Aviation procedures must be followed.
5. Overnighting in the park is only permitted in designated campsites and lodges.
6. Fires may only be made in designated fireplaces or in a mobile 'braai' facility. In the case of the latter, coals and ash must be disposed of in an official refuse facility.

B. Signage, advertising and structures

1. Only the Government of the Republic of Namibia (GRN) may erect signs in the park, and all signs shall conform to the standards specified by the Namibian Roads Authority (NRA).
2. Signs must be maintained - to avoid them becoming derelict and an eyesore.
3. Billboards or outdoor advertising of any kind are/is explicitly prohibited.
4. Unless authorized in writing, no one may erect any structure other than a temporary shaded wind-shelter (in the case of beachgoers) in the park.

C. Tourism and Concessions

1. No one may offer accommodation, tours or special events in the park unless they have a valid concession or permit authorized by the respective Ministers and issued by the Permanent Secretaries of MET and MFMR
2. No lodge or campsite may be established in the park unless its establishment has been guided by either an Environmental Impact Assessment (EIA) and Environmental Management Plan (EMP), or a fast-track EMP should MET decide that an EIA is not necessary. In any event, there must be an Environmental Contract that stipulates the environmental safeguards that must be complied with.
3. The GRN may issue concessions in the park in accordance with the MET's tourism and concession policies.
4. No person may make any film or photo for commercial purposes without the written permission of the Park Authorities.
5. Without the written permission of the Park Authority, no person, except an officer acting in an official capacity, may
 - a. present public entertainment,
 - b. collect money from the public,
 - c. carry out any trade or business,
 - d. distribute any pamphlet, book, handbill or any other printed or written document,
 - e. organize, hold or address any meeting or assembly, or
 - f. hold an organized angling competition
6. In all cases, conditions will be stipulated for the concession and these must be adhered to.

D. Plant and animal harvesting

1. Unless explicitly allowed by virtue of a valid permit, no-one may harvest any plant or animal for commercial purposes in the park
2. Angling is permitted in the Toscanini village area, Torra Bay and Terrace Bay areas. Staff at Mowe Bay and Ugabmond may angle for domestic consumption only. All anglers must adhere to all Fisheries Regulations.
3. No bait or shellfish may be harvested in the park.
4. Beach-combing is permitted, providing that the intention is to collect items for personal use only, and that items are collected by hand only,
5. Other than the above, no animal may be killed, chased, baited or harassed, and no eggs may be removed from a bird's nest, nor may the nest be tampered with or damaged.

E. Prospecting and mining

1. Prospecting and mining will not be permitted in the park.
2. All prospecting and mining that was authorized prior to the date of entry of these regulations will be preceded by an EIA and EMP, in accordance with Namibia's Environmental Management Act of 2007, and the relevant mining legislation.
3. All mines must be rehabilitated after closure or abandonment, in accordance with the Environmental Management Act of 2007.

F. Industries

1. Other than tourism no industries may be located in the park.
2. No person may erect or lay out any building, structure, port, water installation, fence, seaward protection, beach wall, boat house landing

place, nursery or any other works or facilities without the written permission of the Park Authority.

G. Waste, pollution and litter

1. Any form of littering is illegal. 'Littering' in this case means discarding or leaving a human-made object or food item in the park or on or adjacent to a public road running through the park. 'Leaving' in this case means going away from the place or area where the item was left by the person, whether or not the person intended returning to fetch it later.
2. Fish offal and unused natural bait may be returned to the sea, but may not be left on the beach.
3. Any form of environmental defacing is illegal. 'Defacing' in this case means painting, scratching, writing or spraying names, patterns or motifs on any part of nature or creating new vehicle tracks on the unspoilt desert environment.
4. No waste disposal site may be created in the park unless authorized in writing by the Park Authority.
5. Should a person have no alternative than to use nature as a 'toilet', the toilet paper must either be burnt or removed, and the human waste buried or removed.
6. No person may pollute the soil, ocean or freshwater in any manner.

H. Honorary Wardens

Honorary Wardens will be appointed to assist the GRN in managing the park, and shall have the following responsibilities and powers:

1. To provide information to the public and other stakeholders

2. To inform people that they are in contravention of the regulations, and request them to immediately comply
3. To stop a person and search a vehicle, boat or aircraft, providing there is a reasonable suspicion that the person has been involved in an illegal activity
4. To demand a persons name (as above)
5. To inspect a suspects luggage (in search of any illegal items, such as fish, shellfish, bait, venison, live animals, plants, etc.)
6. To count and/or measure fish or shellfish to determine if they comply with legal requirements
7. To issue an offender with an official warning.
8. To report an offender to the authorized law enforcement agencies, whose task it is to perform an arrest/issue a fine, as the case may be.

I. Powers of an Officer

An officer shall have all the powers accorded to Honorary Warden, as well as the following additional powers:

1. An officer who performs duty in the park may order a person who, in his/her considered opinion commits or has committed an offence, or does or has done anything which gives offence or has given offence to other people in the park, to leave the park forthwith.
2. Any person who has been lawfully ordered by an officer to leave the park in accordance with 1, above, shall leave the park forthwith along the shortest route on which the public may travel.
3. If the Park Authority decides that the person evicted from the park in accordance with 1, above, is a threat to the park or the public in the park, s/he may order that the person may not re-enter the park for a period of 24 months.
4. Any person banned from entering the park in accordance with 3, above, may appeal his/her ban in writing. The appeal will be considered by the Permanent Secretaries of MET and MFMR, and the decision conveyed by them in writing to the appellant.
5. An officer who performs duty in the park may warn, fine or arrest a person who, in his/her considered opinion has contravened any of the

park regulations. In the case of a fine, the amount to be fined shall be made known in the *Government Gazette* from time to time. If the contravention was damage to State property, the officer may issue a fine that is in relation to the costs of repairing or replacing, as the case may be, the damaged property.

6. An officer who performs duty in the park may confiscate from any person an object that has been used to contravene any of the park regulations, or an item that constitutes evidence of the contravention, when s/he issues a fine to the person for the contravention, or arrests the person, as the case may be. The officer shall issue the person a confiscation receipt for the item and shall be responsible for its safekeeping until the case is heard by a competent Court. The Court shall decide whether the item be forfeited to the State or returned to the person.

ooooooooOOOOoooooooooooo